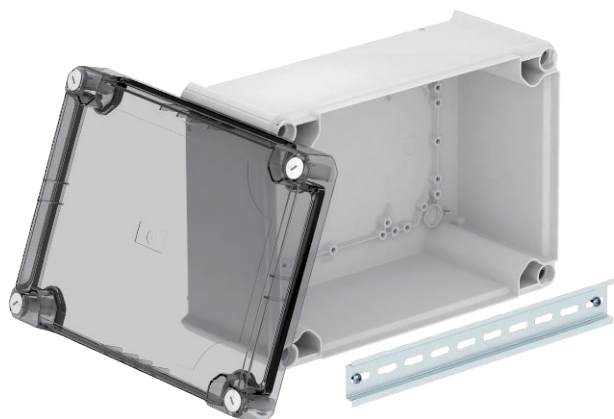


Technical data sheet

Junction box T350, closed, transparent elevated cover

Item no. 2007778



Closed junction box for the connection of cables and lines indoors and in protected outdoor areas. Rectangular design without entries. Suitable for wall and ceiling mounting, on mounting panels and threads in the floor. With the option to fasten inside and to mount via the corner domes. High, transparent cover with quick lock, sealable. Made from halogen-free materials. With hat profile rail.

Junction box according to DIN EN 60670. Flame-resistant to DIN EN 60695/2/11, test temperature 650 °C. Impact resistance IK05 according to DIN EN 50102.



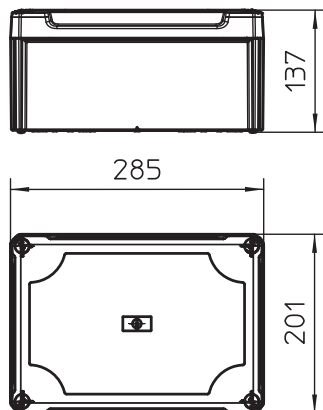
PP/PC Polypropylene/polycarbonate

Additional product text, instruction	acc. to VDE 0471/DIN 695 Part 2-1, test temperature 750°C
Additional product text 1	Box cover transparent. Cable box with closed side panels and hat profile rail
Additional product text 2	Clear internal dimensions: 267x182x127 mm

Master data

Item no.	2007778
Type	T 350 OE HD TR
Description 1	Junction box, closed
Description 2	with high transparent cover
Dimension	285x201x139
Colour	Light grey
RAL number	7035
Material	Polypropylene / polycarbonate
Material symbol	PP/PC
Smallest sales unit (VG)	1 Piece
Weight	68,66 kg/100 pc.

Technical data



Length	285,00 mm
Width	201,00 mm
Height	137,00 mm
Clear internal dimensions	267x182x127 mm
Dimension LxWxH	285x201x137 mm
Dimension	285x201x137 mm
Expandable	<input checked="" type="checkbox"/>
Type of entry	Cable
Type of entry	None
Type of housing penetration	Without
Version	Closed
Measured insulation voltage Vi	500,00 V
Equipment	Without
Cover	Transparent
Cover fastening	Screwed
Entries	None
Entry from rear	<input checked="" type="checkbox"/>
Explosion-tested version	<input type="checkbox"/>
Flame-resistant	acc. to VDE 0471/DIN 695 Part 2-1, test temperature 750°C
Shape	Rectangular
Function maintenance (ETIM)	Without
For Ex zone	Without

Technical data sheet

Junction box T350, closed, transparent elevated cover

Item no. 2007778



Technical data

For Ex zone gas	Without
For Ex zone dust	Without
Fibre-glass reinforced	<input checked="" type="checkbox"/>
Halogen-free	<input checked="" type="checkbox"/>
With screening	<input type="checkbox"/>
with lid	Yes
With cover	<input checked="" type="checkbox"/>
Installation type	Wall/ceiling mounting
Mounting type	Wall/ceiling mounting
Nominal cross section	35,00 mm ²
Nominal voltage	500,00 V
Protection rating	IP66
Protection rating	IP66
Protection rating IK code	IK05.
Sealable	<input checked="" type="checkbox"/>
max. permitted ambient temperature	-5,00 - 60,00 °C
Transparent lid	<input type="checkbox"/>
Weatherproof	<input checked="" type="checkbox"/>