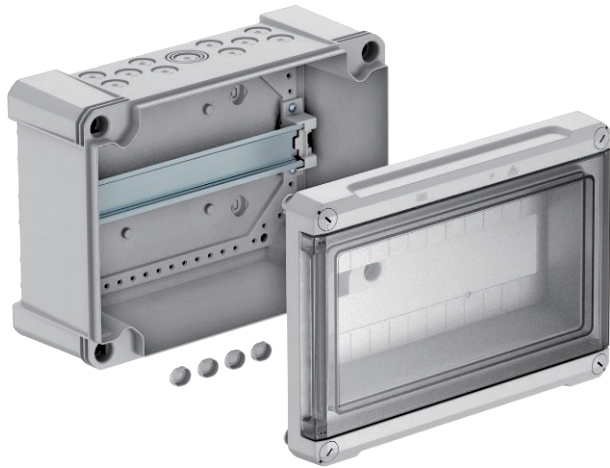


Technical data sheet

Distribution box, 12 division units, empty

Item no. 2008832



The OBO distribution box series offers secure current distribution, both indoors and outdoors. The surface-mounted distribution boxes fulfil all the requirements of IEC 439-3 and are available in different sizes with three to twelve division units.

There are three equipment variants: With screw terminals, with screwless terminals and without terminals. All the sizes and equipment variants are available in two materials. All the distribution boxes are supplied with a pre-mounted 35 hat profile support rail.

The distribution boxes with terminal strips also contain an accessories set, which also comprises a sheet of stickers. The self-adhesive pictograms make the often annoying labelling of the individual division units superfluous. Should labelling be required, then the appropriate stickers are available on the sticker sheet.

The high protection rating (IP66) and the robust construction (IK07 at -25 °C) ensure safe operation, even under difficult environmental circumstances.

The increased spacing between the hat profile support rail and the rear panel of the distribution box makes wiring work considerably easier: Cables are run quickly and simply behind the devices. The cables can be inserted into the interior of the distribution box from above, from below and from the rear, making wiring significantly easier and improving the appearance of the housing.



PS Polystyrene

Additional product text, instruction	Surface-mounted distribution box, with protective insulation for max. 12 division units. There are 11 break-out openings (10x Ø20 and 1x Ø20/25/32) on both the upper and lower sides incl. pre-mounted 35 mm hat profile support rail. The four screw cover caps supplied prevent unwanted "voltage carry over".
Additional product text 1	The PS small distributors are suitable for mounting in interiors and in protected exteriors.
Additional product text 2	Nominal current 63 A Power loss at 40 K 25.1 W

Master data

Item no.	2008832
Type	SDB 12L PS
Description 1	Small distributor
Description 2	no terminal strip, for 12 units
Dimension	286x202x125
Colour	Light grey
RAL number	7035
Material	Polystyrene
Material symbol	PS
Smallest sales unit (VG)	1 Piece
Weight	120,00 kg/100 pc.

Technical data

Length	286,00 mm
Width	202,00 mm
Height	125,00 mm
Dimension LxWxH	286x202x125 mm
Extension option	<input checked="" type="checkbox"/>
Number of rows	1
Cover type	Cover
Lid version	With cut-out
Width in divisional units	12
DIN rail	<input checked="" type="checkbox"/>
Installation location	Internal
EMC version	<input type="checkbox"/>
Glow wire test	650,00 °C
With cover	<input type="checkbox"/>
With mounting plate	<input type="checkbox"/>
With lock	<input type="checkbox"/>
Mounting type	Structure
Nominal voltage	400,00 V

Technical data sheet

Distribution box, 12 division units, empty

Item no. 2008832



Technical data

Nominal operating voltage	400,00 V
Nominal current	63,00 A
Nominal insulating voltage AC	1.000,00 V
Nominal insulating voltage DC	1.500,00 V
Protection rating	IP66
Protection rating IK code	IK06
Transparent lid	<input checked="" type="checkbox"/>
Permitted power loss	Kleinverteiler Leistung Temperaturerhöhung SDB 12 5,0 W 10 K SDB 12 11,5 W 20 K SDB 12 19,0 W 30 K SDB 12 25,0 W 40 K SDB 12 36,0 W 80 °C