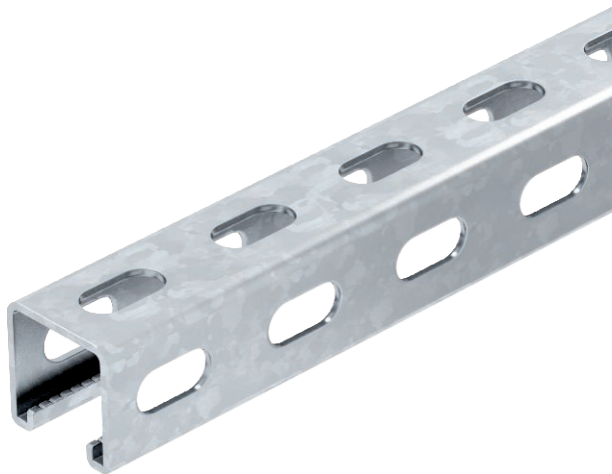


# Technical data sheet

## MS4141 mounting rail, slot 22 mm, side perforation

Item no. 1122481



Heavy-duty C profile rail for individual installation of support constructions, e.g. for cable trays or as a panel for switchgear cabinets. Can also be used for cable routing, in conjunction with clamp clips with a U foot.

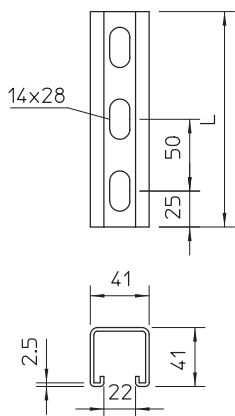


<b>St</b>	Steel
<b>FS</b>	Strip galvanised

### Master data

Item no.	1122481
Type	MS4141PP1000FS
Description 1	Profile rail
Description 2	side perforation, slot 22 mm
Dimension	1000x41x41
Material	Steel
Material symbol	St
Surface	Strip galvanised
Surface to DIN	DIN EN 10346
Surface symbol	FS
Smallest sales unit (VG)	1 m
Weight	281,00 kg/100 m

### Technical data



Length	1.000,00 mm
Width	41,00 mm
Height	41,00 mm
Dimension L	1.000,00 mm
Breakable	<input type="checkbox"/>
lampDimension WxH	41x41 mm
Version	Single profile
Type of perforation	3 sides perforated
Drill hole spacing, centre	50,00 mm
Suitable for maintaining electrical function	<input type="checkbox"/>
Hole size	14x28 mm
Material thickness	2,50 mm
With perforation	<input checked="" type="checkbox"/>
With tothing	<input checked="" type="checkbox"/>
Profile shape	C profile
Slot width	22,00 mm
Static value A	
Static value Iy	
Static value Iz	
Static value Wy	
Static value Wz	