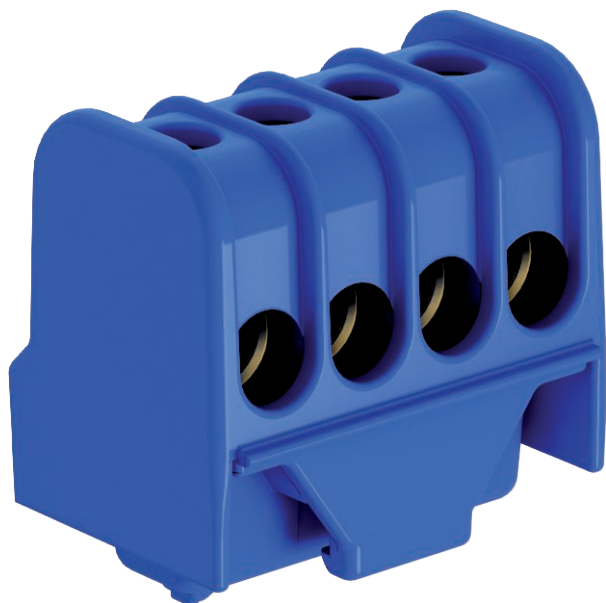


# Technical data sheet

## Neutral conductor terminal, with screw contacts, 4 terminals

Item no. 2016255



Neutral conductor connection terminal, brass, steel screws, electrogalvanised and transparently passivated, nominal cross-section  $6 \div 16 \text{ mm}^2$ , nominal voltage 400 V, 1-pole, with terminal sockets, max. connectable conductors per terminal  $4 \times 16 \text{ mm}^2$ ,  $4 \times 10 \text{ mm}^2$ ,  $8 \times 6 \text{ mm}^2$  or  $12 \times 4 \text{ mm}^2$ .

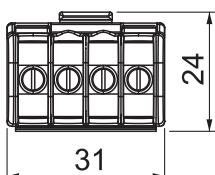
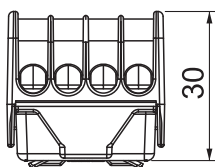


PA Polyamide

### Master data

Item no.	2016255
Type	KL-DBN4x16BL
Description 1	Neutral conductor clamp
Description 2	with screw contacts
Dimension	$4 \times 16 \text{ mm}^2$
Colour	Blue
Material	Polyamide
Material symbol	PA
Smallest sales unit (VG)	10 Piece
Weight	1,98 kg/100 pc.

### Technical data



Closing plate required	<input type="checkbox"/>
Connectable conductor cross-section, single-wire	4,00 - 16,00 $\text{mm}^2$
Connection position	Side
Number of screwless terminals per pole	1
Version of electrical connection 1	Screw connection
Insulation material	Thermoplast
Mounting type	Other
Nominal cross section	6,00 - 16,00 $\text{mm}^2$
Nominal voltage	400,00 V
Nominal current	76,00 A
Pole number	1
Cross-section	max. connectable conductors per terminal max. $4 \times 16 \text{ mm}^2$ , $4 \times 10 \text{ mm}^2$ , $8 \times 6 \text{ mm}^2$ or $12 \times 4 \text{ mm}^2 \text{ mm}^2$