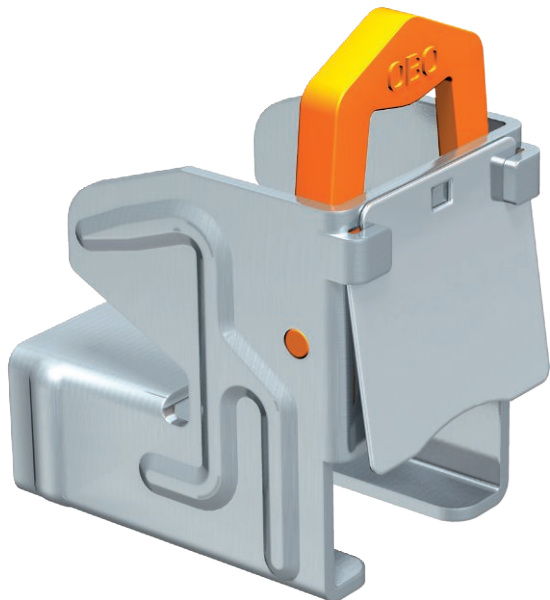


# Technical data sheet

## Beam clamp, for profile rail CM3518

Item no. 1408011



Screwless rustproof coated beam clamp, with blocking spring, suitable for profile rail, type CML3518 and CMS3518. For rapid fastening to steel profiles when installing cable tracks, clamp clips, light mounts, etc. A complete system consists of 2 beam clamps and one piece of C profile rail of any length, and 2 end caps.

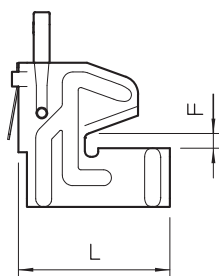
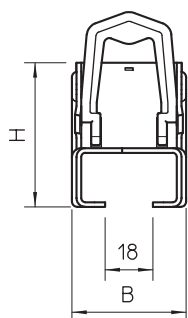


St	Steel
ZL	Zinc slat

### Master data

Item no.	1408011
Type	328 1
Description 1	Beam clamp
Description 2	with retaining spring
Dimension	5-11 mm
Material	Steel
Material symbol	St
Surface	Zinc slat
Surface symbol	ZL
Smallest sales unit (VG)	50 Piece
Weight	10,80 kg/100 pc.

### Technical data



Length	57,00 mm
Width	39,50 mm
Height	54,30 mm
Dimension B	39,50 mm
Dimension H	54,30 mm
Dimension L	57,00 mm
Connection type/component	Other
Fastening type	Clamp
Flangethickness	5,00 - 11,00 mm
Hinge, adjustable	<input type="checkbox"/>
Hinged	<input type="checkbox"/>