

# Technical data sheet

## Locknut, PG thread

Item no. 2043130



Locknut DIN 46320, with PG thread DIN 40430.

Note: Only tighten polystyrene cable glands lightly due to the risk of stress crack formation.

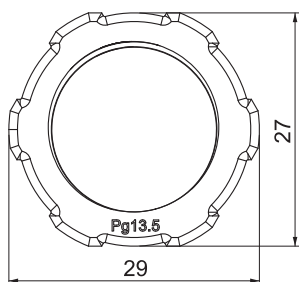
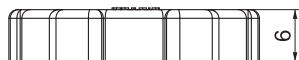


PS Polystyrene

### Master data

Item no.	2043130
Type	116 PG13.5
Description 1	Locknut
Dimension	PG13,5
Colour	Light grey
RAL number	7035
Material	Polystyrene
Material symbol	PS
Smallest sales unit (VG)	100 Piece
Weight	0,18 kg/100 pc.

### Technical data



Dimension E	29,00 mm
Dimension L	6,00 mm
WAF	27,00 mm
Thread type	PG
Thread	Pg 13,5
Nominal thread size metric/PG	13,5
Fibre-glass reinforced	<input type="checkbox"/>
Halogen-free	<input checked="" type="checkbox"/>
Impact-resistant	<input checked="" type="checkbox"/>