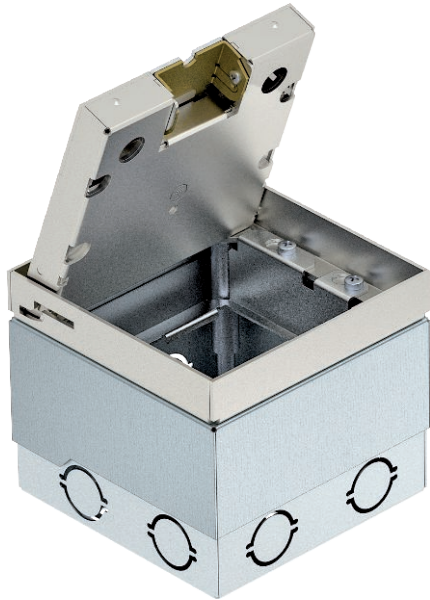


Technical data sheet

UDHOME2 floor socket, with floor covering recess in stainless steel lid, freely equippable
Item no. 7427090



Square floor socket with floor covering recess for use in dry-care cavity and screed floors for indoor use. Installation housing with pre-marked insertion openings for pipelines (M25). Cover adjustable to the top edge of the floor covering using four height-adjustment supports. The minimum installation depth is 110 mm, the height-adjustment range + 20 mm. Surfaces visible in the floor covering made of: Stainless steel.

A2 Stainless steel, rustproof 1.4303

Additional product text, instruction Up to two Modul45® sockets can be installed. In addition, up to two modular data modules (Keystones) can be installed with optional mounting supports.

Master data

Item no.	7427090
Type	UDHOME2 V
Description 1	Floor socket, complete
Description 2	empty, for 2 Modul45
Dimension	125x125x110
Material	Stainless steel, grade 305
Material symbol	A2
Smallest sales unit (VG)	1,00 Piece
Weight	206,00 kg/100 pc.

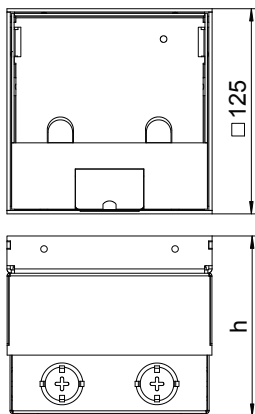
Technical data sheet

UDHOME2 floor socket, with floor covering recess in stainless steel lid, freely equippable

Item no. 7427090



Technical data



Dimension h	110,00 mm
Wide external dimensions	125,00 mm
Wide installation dimensions	125,00 mm
Length of external dimensions	125,00 mm
Length of installation dimensions	125,00 mm
Number of mounting boxes	0,00
Floor covering thickness	15,00 mm
Floor covering protection frame	<input type="checkbox"/>
Floor care	Dry
Version for	Square
Installation depth	110,00 mm
Floor height	110-130 mm
Suitable for wet care	<input type="checkbox"/>
Suitable for raised floor installation	<input checked="" type="checkbox"/>
Suitable for cavity floor installation	<input checked="" type="checkbox"/>
Suitable for underfloor ducts	<input checked="" type="checkbox"/>
With floor covering recess	<input checked="" type="checkbox"/>
Height-adjustment range	110,00 - 130,00 mm