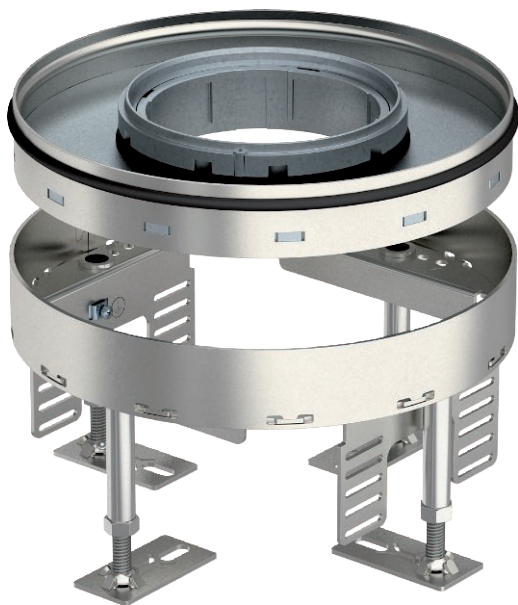


Technical data sheet

Height-adjustable heavy-duty cassette for tube body
RKFRSL, nominal size R4, stainless steel
Item no. 7409464



Round heavy-duty cassette for tube body of nominal size R4 for the installation of accessories in trunking systems, raised and cavity floors, in dry or wet-cleaned floors indoors. Load class 2 to 20 kN.

Height-adjustable heavy-duty cassette with tube body with a load bearing capacity of 2–20 kN, 2-compartment. 2 APMT2 cover plates can be installed. For the installation of 2 UT3 universal supports for 4 individual installation devices with support ring/support clamp or 6 Modul 45 devices.



VA Stainless steel, rustproof 1.4301

Master data

Item no.	7409464
Type	RKFR2 4 SL2V2 25
Description 1	Heavy-duty cassette
Description 2	for tube, 20 kN
Dimension	ø 215mm
Material	Stainless steel, material no. 1.4301
Material symbol	A2
Smallest sales unit (VG)	1 Piece
Weight	669,00 kg/100 pc.

Technical data

Floor covering thickness	25,00 mm
Floor height	109-159 mm
Number of installable devices	6
Number of mounting boxes	2
Number of cable outlets	1
Version for	Round
Cable outlet version	Lowerable tube body
Floor care	Wet
Installation depth	109,00 mm
Decouplable	<input type="checkbox"/>
Device support to accept mounting boxes	<input checked="" type="checkbox"/>
Nominal size for device installation units	R4
Suitable for raised floor installation	<input checked="" type="checkbox"/>
Suitable for cavity floor installation	<input checked="" type="checkbox"/>
Suitable for underfloor box	250/350
Height-adjustment range	109,00 - 159,00 mm
Opening mechanism	Handle
Heavy load class	20 kN (OBO SL2)
Schwerlastausführung	<input checked="" type="checkbox"/>
Typ des Einbausystems	UT3

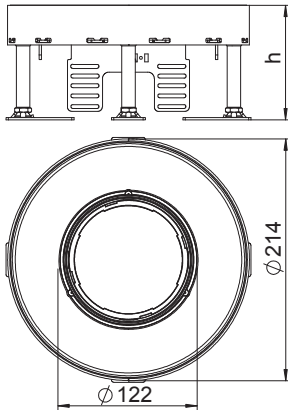
Technical data sheet

Height-adjustable heavy-duty cassette for tube body
RKFRSL, nominal size R4, stainless steel
Item no. 7409464



Technical data

Dimensions



Dimension h	114,00 mm
Installation diameter	215