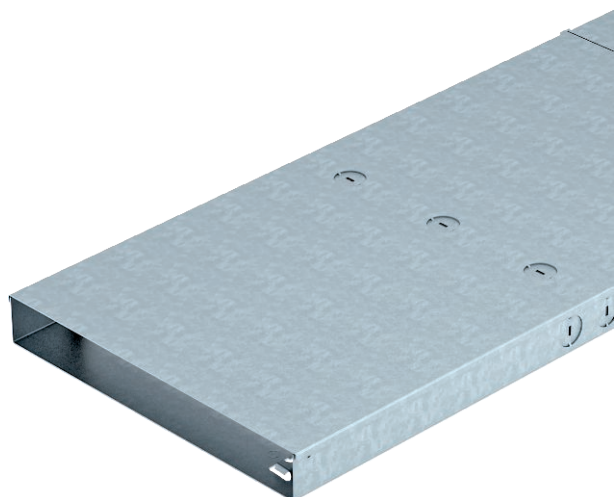


Technical data sheet

Trunking unit with cable outlet M25

Item no. 7428195



The raised floor trunking can be used for routing cables underneath raised floor panels. Retaining straps permit the self-contacting mounting of separating retainers.



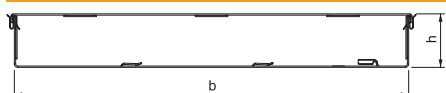
- St** Steel
- FS** Strip galvanised

Product text, scope of delivery	Included in the delivery are one trunking base, four trunking covers and eight locking brackets. Two trunking covers have three M25 pipe entry openings. Two trunking covers are completely closed. Separating retainers should be ordered separately.
---------------------------------	--

Master data

Item no.	7428195
Type	RFT 300 40
Description 1	Raised floor trunking
Description 2	with cover
Dimension	2400x300x40
Material	Steel
Material symbol	St
Surface	Strip galvanised
Surface to DIN	DIN EN 10346
Surface symbol	FS
Weight	1.301,10 kg/100 pc.

Technical data



Length	2.400,00 mm
Width	300,00 mm
Height	40,00 mm
Dimension b	300,00 mm
Dimension h	40,00 mm
Number of compartments	3,00 pc.
Plate thickness	1,00 mm
Floor plate	<input checked="" type="checkbox"/>
Seal installation option	<input type="checkbox"/>
Cover fastening, locking	<input checked="" type="checkbox"/>
Installation opening for on-floor tank	<input type="checkbox"/>
Decouplable	<input type="checkbox"/>
For pipe connection	<input checked="" type="checkbox"/>
Suitable for expansion joint	<input type="checkbox"/>
Suitable for screed-flush closed underfloor ducts	<input type="checkbox"/>
Suitable for flushfloor, open underfloor duct	<input type="checkbox"/>

Technical data sheet

Trunking unit with cable outlet M25

Item no. 7428195



Technical data

With overhang	<input type="checkbox"/>
With separating retainer	<input type="checkbox"/>
With connection opening	<input checked="" type="checkbox"/>
With equipotential bonding	<input checked="" type="checkbox"/>
With screening	<input type="checkbox"/>
Removable cover	<input checked="" type="checkbox"/>
Schwerlastausführung	<input type="checkbox"/>
Separating retainer fastening	Lock