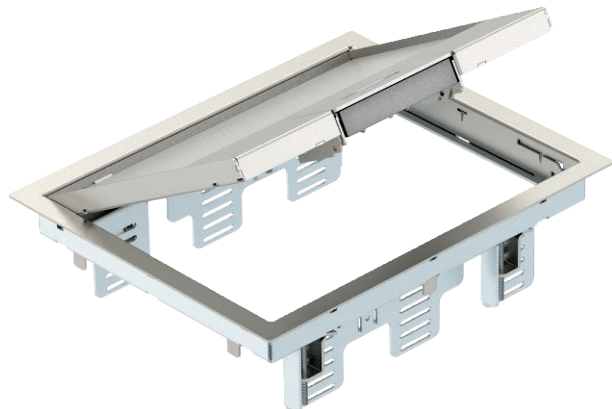


Technical data sheet

GES6M-2 service outlet with handle clamp

Item no. 7405299



Service outlet with handle clamp for up to 9 individual Modul 45 devices in 3 UT3 universal supports, use in trunking systems and system floors for indoor use. Locking ladder made of galvanised sheet steel.

Up to 6 installation devices with 50 mm central plate can be inserted.

Service outlet with handle clamp, 3-compartment, for the installation of MT6 mounting support. Three type APMT2 cover plates can be installed.

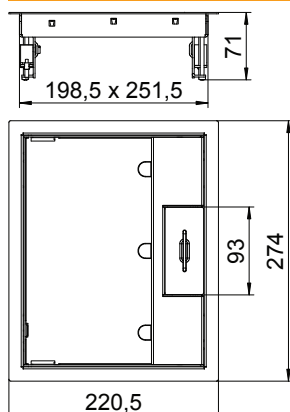


VA Stainless steel, rustproof 1.4301

Master data

Item no.	7405299
Type	GES6M-2 10U
Description 1	Service outlet
Description 2	for universal mounting
Dimension	274x221x70
Material	Stainless steel, material no. 1.4301
Material symbol	A2
Smallest sales unit (VG)	1 Piece
Weight	320,00 kg/100 pc.

Technical data



Length	274,00 mm
Width	220,50 mm
Wide external dimensions	220,50 mm
Wide installation dimensions	200,00 mm
Length of external dimensions	274,00 mm
Length of installation dimensions	253,00 mm
Number of installable devices	9
Number of mounting boxes	3
Cable outlet version	Swivellable cord outlet
Floor covering thickness	10,00 mm
Floor covering protection frame	<input checked="" type="checkbox"/>
Floor care	Dry
Version for	Rectangular
Seal installation option	<input type="checkbox"/>
Installation depth	78,00 mm
Floor height	78 mm
Device support to accept mounting boxes	<input checked="" type="checkbox"/>
Suitable for wet care	<input type="checkbox"/>
Suitable for screed-flush closed underfloor ducts	<input type="checkbox"/>
Suitable for screed-covered underfloor ducts	<input checked="" type="checkbox"/>
Suitable for raised floor installation	<input checked="" type="checkbox"/>
Suitable for cavity floor installation	<input checked="" type="checkbox"/>
Suitable for underfloor ducts	<input checked="" type="checkbox"/>
With floor covering recess	<input checked="" type="checkbox"/>

Technical data sheet

GES6M-2 service outlet with handle clamp

Item no. 7405299



Technical data

Nominal size for device installation units	6
Suitable for underfloor box	250/350
Opening mechanism	Handle
Frame version	Carpet protection frame
Schwerlastausführung	<input type="checkbox"/>
Typ des Einbausystems	MT3 / GB2