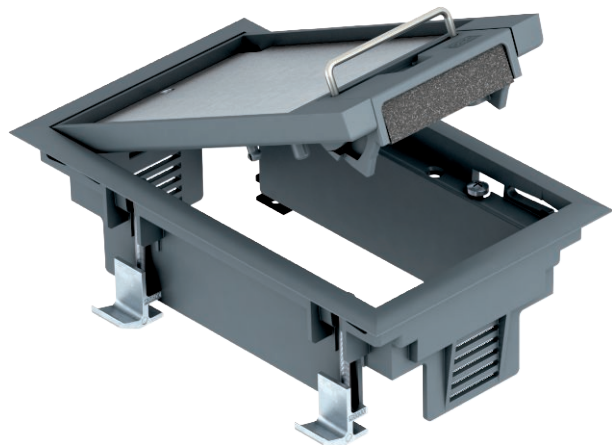


# Technical data sheet

## GES2DB service outlet with handle clamp

Item no. 7405100



Service outlet with handle clamp for up to 3 individual Modul 45 devices in one UT3 universal support, use in duct systems and system floors for indoor use.

Up to two installation devices with 50 mm central plate can be inserted.

Service outlet with handle clamp, 1-compartment, for the installation of MT2 mounting support.

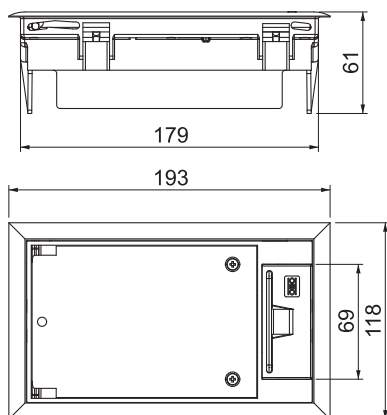


PA Polyamide

### Master data

Item no.	7405100
Type	GES2 DB 7011
Description 1	Service outlet
Description 2	for raised floor mounting
Dimension	192x118x91
Colour	Iron grey
RAL number	7011
Material	Polyamide
Material symbol	PA
Smallest sales unit (VG)	1 Piece
Weight	66,40 kg/100 pc.

### Technical data



Dimension h	73,00 mm
Wide external dimensions	118,00 mm
Wide installation dimensions	104,00 mm
Length of external dimensions	194,00 mm
Length of installation dimensions	180,00 mm
Number of installable devices	3
Number of mounting boxes	1
Cable outlet version	Swivellable cord outlet
Floor covering thickness	5,00 mm
Floor covering protection frame	<input checked="" type="checkbox"/>
Floor care	Dry
Version for	Rectangular
Seal installation option	<input type="checkbox"/>
Installation depth	73,00 mm
Floor height	73 mm
Device support to accept mounting boxes	<input checked="" type="checkbox"/>
Suitable for wet care	<input type="checkbox"/>
Suitable for screed-flush closed underfloor ducts	<input type="checkbox"/>
Suitable for screed-covered underfloor ducts	<input type="checkbox"/>
Suitable for raised floor installation	<input checked="" type="checkbox"/>
Suitable for cavity floor installation	<input checked="" type="checkbox"/>

# Technical data sheet

## GES2DB service outlet with handle clamp

Item no. 7405100



### Technical data

Suitable for underfloor ducts	<input type="checkbox"/>
With floor covering recess	<input checked="" type="checkbox"/>
Nominal size for device installation units	2
Suitable for underfloor box	250
Opening mechanism	Handle
Frame version	Carpet protection frame
Schwerlastausführung	<input type="checkbox"/>
Typ des Einbausystems	UT3
Approvals	