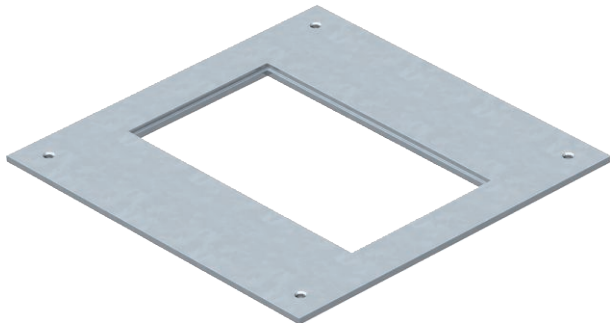


Technical data sheet

Mounting lid 250, nominal size 2

Item no. 7400455



Mounting lid for underfloor junction and branch box of type UZD250-3 for the installation of an installation unit of nominal size 2. Installation opening 3 mm recessed for later blanking lock with lid blind plate.



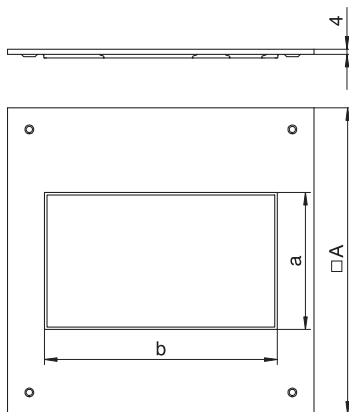
St Steel

FS Strip galvanised

Master data

Item no.	7400455
Type	DUG 250-3 2
Description 1	Mounting lid
Description 2	250-2/3 for GES2
Dimension	282x282x4
Material	Steel
Material symbol	St
Surface	Strip galvanised
Surface to DIN	DIN EN 10346
Surface symbol	FS
Smallest sales unit (VG)	1 Piece
Weight	180,00 kg/100 pc.

Technical data



Length	282,00 mm
Width	282,00 mm
Dimension A	282,00 mm
Dimension a	105,00 mm
Dimension b	181,00 mm
Mounting opening cover	<input checked="" type="checkbox"/>
Fastening type	Fastening with bolt
Plate thickness	4,00 mm
Floor care	Dry
Seal installation option	<input type="checkbox"/>
Installation opening for on-floor tank	<input type="checkbox"/>
Suitable for screed-covered underfloor ducts	<input checked="" type="checkbox"/>
Suitable for screed-flush closed underfloor ducts	<input type="checkbox"/>
Duct width	190,00 - 250,00 mm
Mounting opening	Square
Nominal size	250,00 mm
Nominal size for device installation units	2
Schwerlastausführung	<input type="checkbox"/>