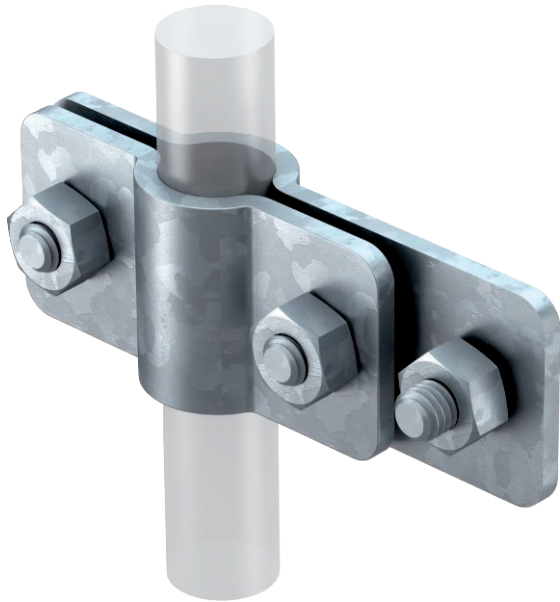


Technical data sheet

Connection clamp for earth rod on flat conductor

Item no. 5001416



- ST, BP, OMEX and LightEarth systems
- On flat conductors
- Including hex-head screw for attaching flat conductors

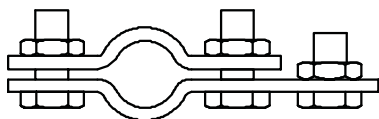


- St** Steel
- FT** Hot-dip galvanised

Master data

Item no.	5001416
Type	2730 25 M12 FT
Description 1	Connection clamp
Description 2	for earth rods
Dimension	25mm
Material	Steel
Material symbol	St
Surface	Hot-dip galvanised
Surface to DIN	DIN EN ISO 1461
Surface symbol	FT
Smallest sales unit (VG)	5 Piece
Weight	46,28 kg/100 pc.

Technical data



Shape	Connection clip
Short-circuit current (50 Hz)(1 s; ≤300°C)	8,50 kA
Intermediate plate	<input type="checkbox"/>

