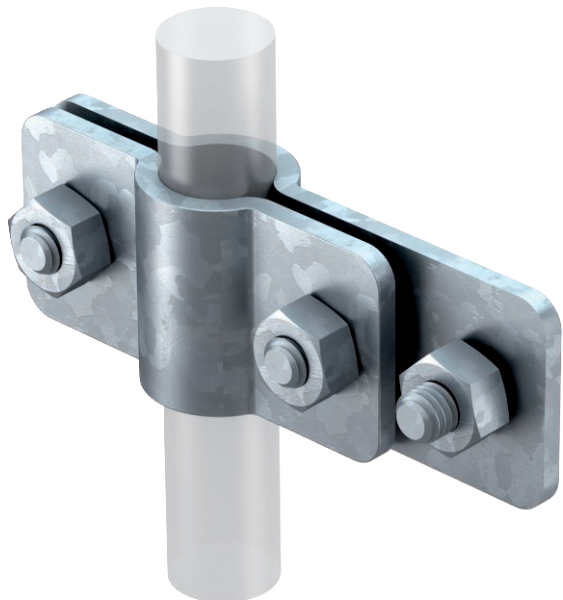


# Technical data sheet

## Connection clamp for earth rod on flat conductor

Item no. 5001404



- ST, BP, OMEX and LightEarth systems
- On flat conductors
- Including hex-head screw for attaching flat conductors

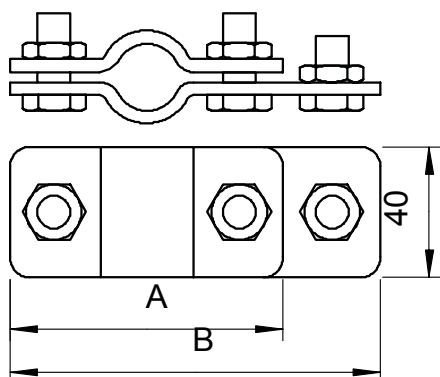


- St** Steel
- FT** Hot-dip galvanised

### Master data

Item no.	5001404
Type	2730 20 FT
Description 1	Connection clamp
Description 2	for OMEX earth rod
Dimension	20mm
Material	Steel
Material symbol	St
Surface	Hot-dip galvanised
Surface to DIN	DIN EN ISO 1461
Surface symbol	FT
Smallest sales unit (VG)	5 Piece
Weight	35,90 kg/100 pc.

### Technical data



Dimension A	84,00 mm
Dimension B	114,00 mm
Shape	Connection clip
Earthing connection diameter for earth rods	20 mm 20,00 Ø mm
Short-circuit current (50 Hz)(1 s; ≤300°C)	7,90 kA
Intermediate plate	<input type="checkbox"/>