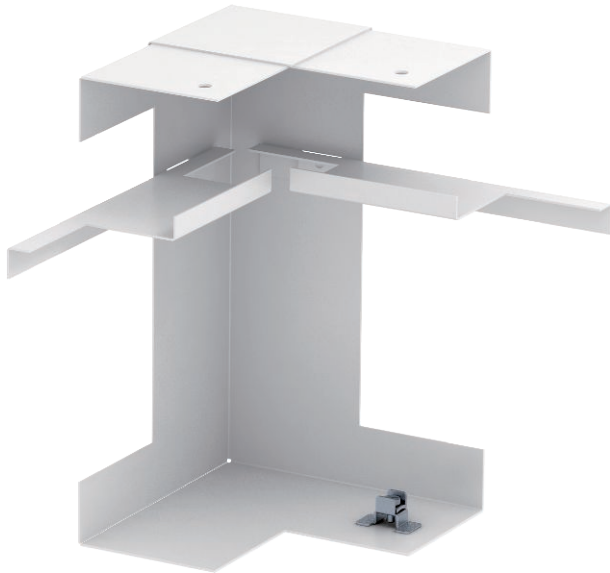


Technical data sheet

Internal corner, asymmetrical, simple, for device installation trunking Rapid 80 type GS-S70210
Item no. 6278440



Internal corner for direct installation on GS device installation trunking.

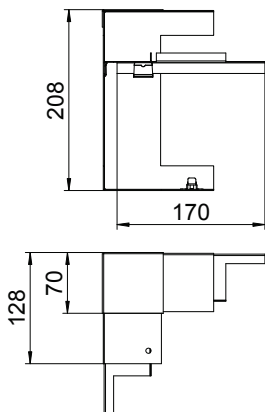


St Steel

Master data

Item no.	6278440
Type	GS-DI70210RW
Description 1	Internal corner
Description 2	simple, symmetrical
Dimension	70x210mm
Colour	Pure white
RAL number	9010
Material	Steel
Material symbol	St
Smallest sales unit (VG)	1 Piece
Weight	77,00 kg/100 pc.

Technical data



Width	210,00 mm
Height	70,00 mm
Number of covers	0
Version for	Base
Shape	Symmetrical
Halogen-free	<input checked="" type="checkbox"/>
Cable retaining clip	<input type="checkbox"/>
Duct connector	<input type="checkbox"/>
Mounting perforation in base	<input checked="" type="checkbox"/>
Cover width	0 mm
Cover width 2	0,00 mm
Cover width 3	0,00 mm
Protective film	<input checked="" type="checkbox"/>
Angle range	90,00 - 90,00 °