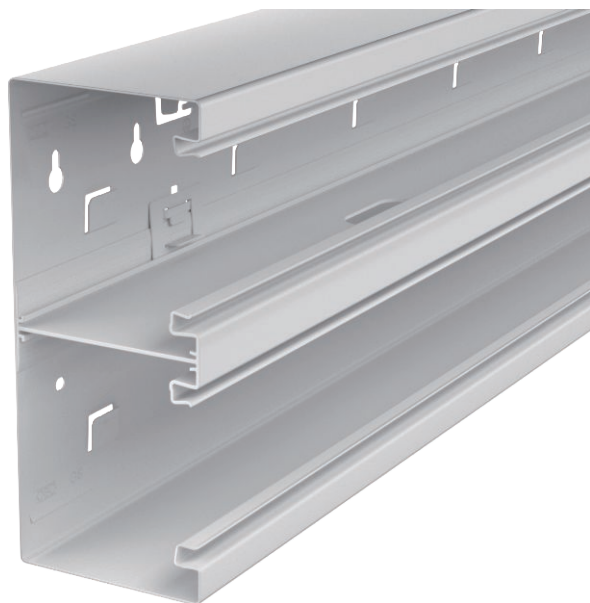


# Technical data sheet

## Device installation trunking, type GSD90210

Item no. 6278502



GS device installation trunking for mounting on the wall or on fastening panels. The GS device installation trunking possesses self-contacting locking straps to accept a sheet steel partition. The equipotential bonding between the trunking bases takes place using the trunking coupler. The protective measure and the equipotential bonding is guaranteed between the cover and the base by the self-contacting trunking cover. The real system opening is 76.5 mm.



St Steel

Additional product text 1 | Overlengths up to 3,000 mm for trunking bases and covers as well as other RAL colours can be provided on request. The visible surfaces of the painted device installation trunking are laminated.

### Master data

Item no.	6278502
Type	GS-D90210LGR
Description 1	Device installation trunking
Description 2	symmetrical
Dimension	90x210x2000
Colour	Light grey
RAL number	7035
Material	Steel
Material symbol	St
Smallest sales unit (VG)	2,00 m
Weight	462,00 kg/100 m

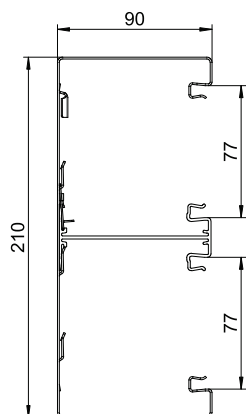
# Technical data sheet

## Device installation trunking, type GSD90210

Item no. 6278502



### Technical data



Length	2.000,00 mm
Width	210,00 mm
Height	90,00 mm
Number of covers	2,00
Number of insertable partitions	1,00
Rear panel version (inner side)	With locking lugs
Rectangular shape	<input checked="" type="checkbox"/>
Fastening type	Screw-on
Base perforation	with base perforation
Halogen-free	<input checked="" type="checkbox"/>
Cable retaining clip	<input type="checkbox"/>
Duct depth	90,00 mm
Trunking height	210,00 mm
Duct connector	<input type="checkbox"/>
Cover mounting type	Internal
Mounting perforation in base	<input checked="" type="checkbox"/>
Usable cross-section	16.205,00 mm <sup>2</sup>
Cover width	76,5 mm
Cover width 2	0,00 mm
Cover width 3	0,00 mm
Cover supplied	<input type="checkbox"/>
Protective film	<input checked="" type="checkbox"/>
Symmetrical	<input checked="" type="checkbox"/>