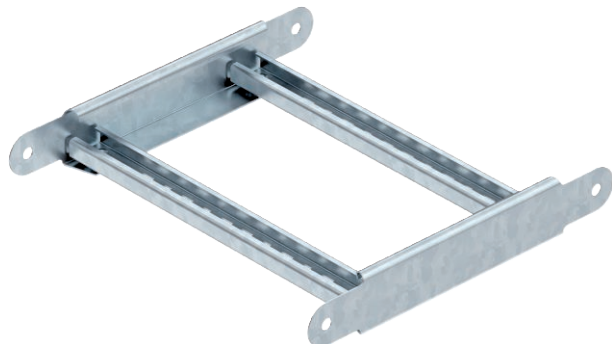


Technical data sheet

Adjustable bend element

Item no. 6225416



Articulated bend element with welded rung for use in cable ladder types with a side height of 45 mm.

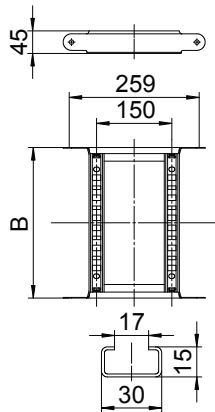


| | |
|-----------|------------------|
| St | Steel |
| FS | Strip galvanised |

Master data

| | |
|--------------------------|-------------------------|
| Item no. | 6225416 |
| Type | LGBE 450 FS |
| Description 1 | Adjustable bend element |
| Description 2 | for cable ladder |
| Dimension | 45x500 |
| Material | Steel |
| Material symbol | St |
| Surface | Strip galvanised |
| Surface to DIN | DIN EN 10346 |
| Surface symbol | FS |
| Smallest sales unit (VG) | 1,00 Piece |
| Weight | 104,50 kg/100 pc. |

Technical data



| | |
|--|--------------------------|
| Width | 500,00 mm |
| Side height | 45,00 mm |
| Dimension B | 500,00 mm |
| Bend (angle) | Adjustable |
| Connector version | Integrated connector |
| Rung version | Profile perforated |
| Side rail version | Flat profile |
| Suitable for maintaining electrical function | <input type="checkbox"/> |
| Rail thickness | 1,25 mm |
| Change of direction | Vertical, rising/falling |
| Rustproof steel, pickled | <input type="checkbox"/> |
| Hinged | <input type="checkbox"/> |
| Side perforation | <input type="checkbox"/> |
| Wide-span version | <input type="checkbox"/> |