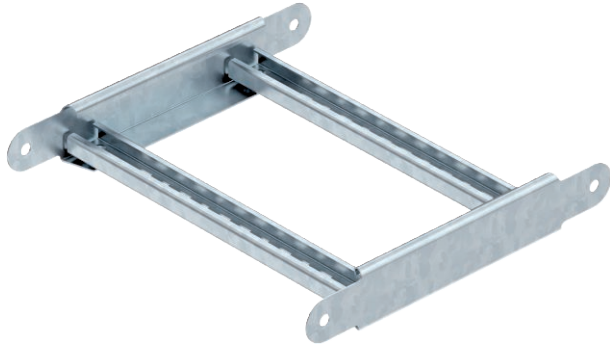


Technical data sheet

Adjustable bend element

Item no. 6225412



Articulated bend element with welded rung for use in cable ladder types with a side height of 45 mm.

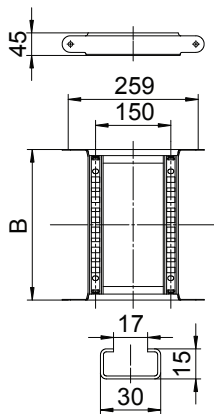


St	Steel
FS	Strip galvanised

Master data

Item no.	6225412
Type	LGBE 430 FS
Description 1	Adjustable bend element
Description 2	for cable ladder
Dimension	45x300
Material	Steel
Material symbol	St
Surface	Strip galvanised
Surface to DIN	DIN EN 10346
Surface symbol	FS
Smallest sales unit (VG)	1,00 Piece
Weight	78,60 kg/100 pc.

Technical data



Width	300,00 mm
Side height	45,00 mm
Dimension B	300,00 mm
Bend (angle)	Adjustable
Connector version	Integrated connector
Rung version	Profile perforated
Side rail version	Flat profile
Suitable for maintaining electrical function	<input type="checkbox"/>
Rail thickness	1,25 mm
Change of direction	Vertical, rising/falling
Rustproof steel, pickled	<input type="checkbox"/>
Hinged	<input type="checkbox"/>
Side perforation	<input type="checkbox"/>
Wide-span version	<input type="checkbox"/>