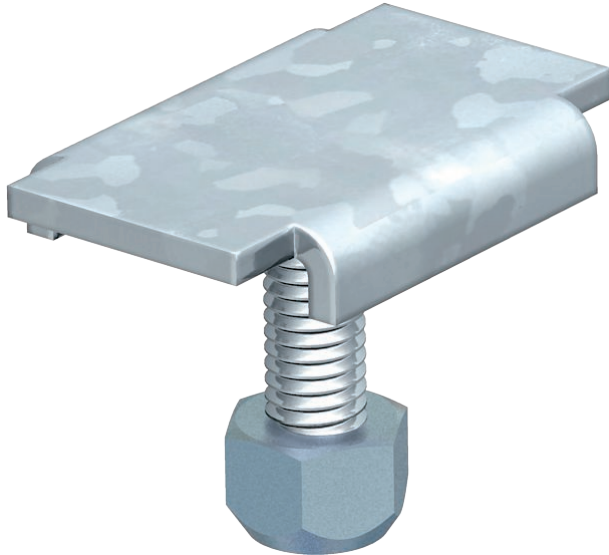


Technical data sheet

KS 23/35 hold-down clamp

Item no. 6015174



Clamp for fixing the mounting bracket, type MW 45 and MW 90, to the mesh cable tray, type CGR.
Including self-locking M6 nut.



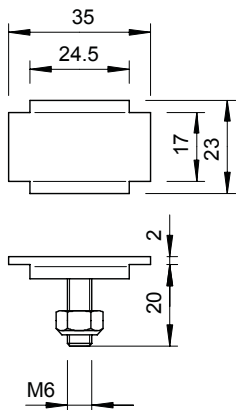
St Steel

FT Hot-dip galvanised

Master data

Item no.	6015174
Type	KS 23 35 FT
Description 1	Hold-down clamp
Description 2	for C-mesh cable tray
Dimension	M6x20
Material	Steel
Material symbol	St
Surface	Hot-dip galvanised
Surface to DIN	DIN EN ISO 1461
Surface symbol	FT
Smallest sales unit (VG)	100 Piece
Weight	2,02 kg/100 pc.

Technical data



Version	Straight and angle connector
Suitable for cable tray	<input type="checkbox"/>
Suitable for mesh cable tray	<input checked="" type="checkbox"/>
Suitable for cable ladder	<input type="checkbox"/>
Hole diameter	6,00 mm
Rustproof steel, pickled	<input type="checkbox"/>
Connection type	Screw connector