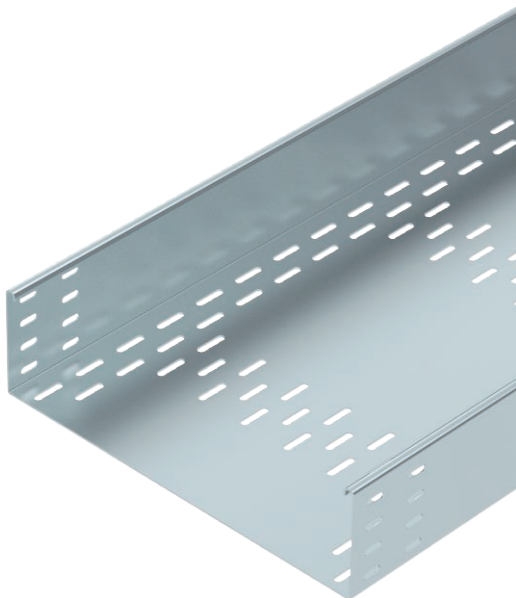


# Technical data sheet

## Cable tray BKRS 110

Item no. 6061987



Heavy-duty, walkable cable tray system BKRS with base perforation, in 110 mm side height.

The cable tray has connector perforations on both sides.

Straight connectors should be ordered separately and in the appropriate quantity.

Magnetic shield insulation without cover 20 dB, with cover 50 dB.



**St** Steel

**FS** Strip galvanised

### Master data

Item no.	6061987
Type	BKRS 1140 FS
Description 1	Cable tray BKRS
Description 2	walkable
Manufacturer	OBO
Dimension	110x400x3000
Material	Steel
Material symbol	St
Surface	Strip galvanised
Surface to DIN	DIN EN 10346
Surface symbol	FS
Smallest sales unit (VG)	3 m
Weight	952,97 kg/100 m

### Technical data

Usable cross-section	39.600,00 mm <sup>2</sup>
Usable cross-section	396,00 cm <sup>2</sup>
Suitable for maintaining electrical function	<input type="checkbox"/>
Connector version	Without connectors
With cover	<input type="checkbox"/>
Mounting perforation in base	<input checked="" type="checkbox"/>
NATO hole pattern	<input type="checkbox"/>
Rustproof steel, pickled	<input type="checkbox"/>
Side perforation	<input type="checkbox"/>
Wide-span version	<input type="checkbox"/>

# Technical data sheet

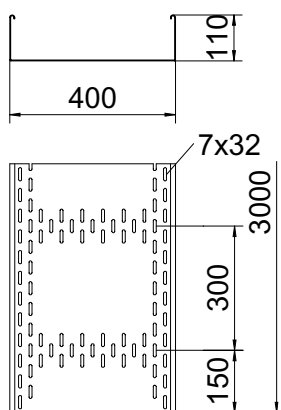
## Cable tray BKRS 110

Item no. 6061987



### Technical data

#### Dimensions



Length	3.000,00 mm
Width	400,00 mm
Height	110,00 mm
Side height	110,00 mm
Dimension B	400,00 mm
Dimension H	110,00 mm
Dimension L	3.000,00 mm
Plate thickness	2,00 mm

#### Appr. load:

Support spacing 1.5 m	3,44 kN/m
Support spacing 2.0 m	3,33 kN/m
Support spacing 2.5 m	2,61 kN/m
Support spacing 3.0 m	2,08 kN/m