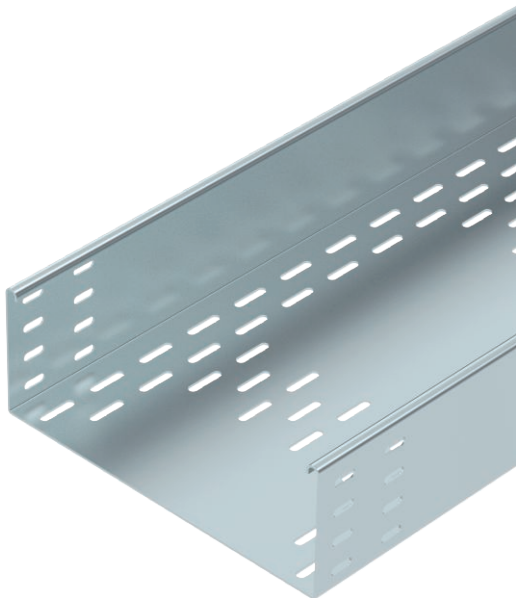


Technical data sheet

Cable tray BKRS 110

Item no. 6061985



Heavy-duty, walkable cable tray system BKRS with base perforation, in 110 mm side height.

The cable tray has connector perforations on both sides.

Straight connectors should be ordered separately and in the appropriate quantity.

Magnetic shield insulation without cover 20 dB, with cover 50 dB.



St Steel

FS Strip galvanised

Master data

Item no.	6061985
Type	BKRS 1130 FS
Description 1	Cable tray BKRS
Description 2	walkable
Manufacturer	OBO
Dimension	110x300x3000
Material	Steel
Material symbol	St
Surface	Strip galvanised
Surface to DIN	DIN EN 10346
Surface symbol	FS
Smallest sales unit (VG)	3 m
Weight	806,27 kg/100 m

Technical data

Usable cross-section	29.600,00 mm ²
Usable cross-section	296,00 cm ²
Suitable for maintaining electrical function	<input type="checkbox"/>
Connector version	Without connectors
With cover	<input type="checkbox"/>
Mounting perforation in base	<input checked="" type="checkbox"/>
NATO hole pattern	<input type="checkbox"/>
Rustproof steel, pickled	<input type="checkbox"/>
Side perforation	<input type="checkbox"/>
Wide-span version	<input type="checkbox"/>

Technical data sheet

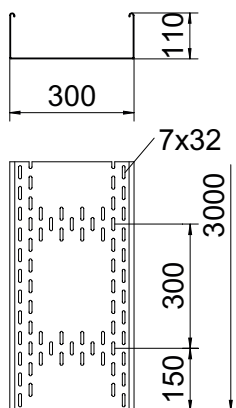
Cable tray BKRS 110

Item no. 6061985



Technical data

Dimensions



Length	3.000,00 mm
Width	300,00 mm
Height	110,00 mm
Side height	110,00 mm
Dimension B	300,00 mm
Dimension H	110,00 mm
Dimension L	3.000,00 mm
Plate thickness	2,00 mm

Appr. load:

Support spacing 1.5 m	3,44 kN/m
Support spacing 2.0 m	3,33 kN/m
Support spacing 2.5 m	2,61 kN/m
Support spacing 3.0 m	2,08 kN/m