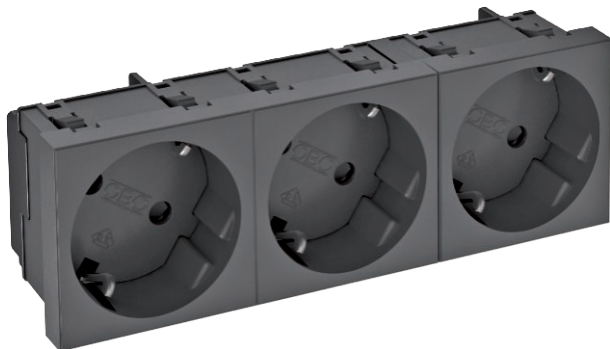


# Technical data sheet

## 33° socket, protective contact, triple

Item no. 6120130



Power socket Triple 33°, with increased touch protection with screwless terminals, 2-pin, 16 A, 250 V~, with connection terminals to IEC 60884-1.



**PC** Polycarbonate

Additional product text 2 For installation in Rapid 45 ducts, device installation ducts, installation columns, underfloor systems and Deskboxes.

### Master data

Item no.	6120130
Type	STD-D3 SWGR3
Description 1	Socket 33°, triple
Description 2	protective contact
Dimension	250V, 10/16A
Colour	Black-grey
RAL number	7021
Material	Polycarbonate
Material symbol	PC
Smallest sales unit (VG)	1,00 Piece
Weight	11,00 kg/100 pc.

### Technical data

	Width	135,00 mm
	Height	45,00 mm
	Depth	42,00 mm
	Cover	Central plate
	Closable	<input type="checkbox"/>
	Connection type	Screwless terminal
	Printed label/coding	Without printing
	Version	Triple 33°
	Version	Socket 33°, triple, protective contact
	Surface version	Matt
	Sockets/switch version	SCHUKO
	Version for	SCHUKO
	Number of poles	2,00
Number of units	3,00	
Number of modules (for modular construction)	0,00	
Number of switchable sockets	0,00	

# Technical data sheet

33° socket, protective contact, triple

Item no. 6120130



## Technical data

Ejection mechanism	<input type="checkbox"/>
Fastening type	Lock
Labelling panel	<input type="checkbox"/>
Operating temperature	-5,00 - 40,00 °C
Error current protection	<input type="checkbox"/>
For more difficult conditions (according to VDE)	<input type="checkbox"/>
Halogen-free	<input checked="" type="checkbox"/>
Insulated installation	<input type="checkbox"/>
Increased touch protection	<input checked="" type="checkbox"/>
Hinged cover	<input type="checkbox"/>
Coding	No
Warning light	<input type="checkbox"/>
With on/off switch	<input type="checkbox"/>
With fine-wire fuse	<input type="checkbox"/>
With functional lighting	<input type="checkbox"/>
With orientation lighting	<input type="checkbox"/>
Mounting type	Device installation duct
Nominal voltage	250,00 V
Nominal current	16,00 A
Protection rating	Other
Special power supply	Without special power supply
Socket version	Schutzkontakt
Socket angle	33°
Transparent	<input type="checkbox"/>
Surge protection	<input type="checkbox"/>
Rotated central insert	<input checked="" type="checkbox"/>