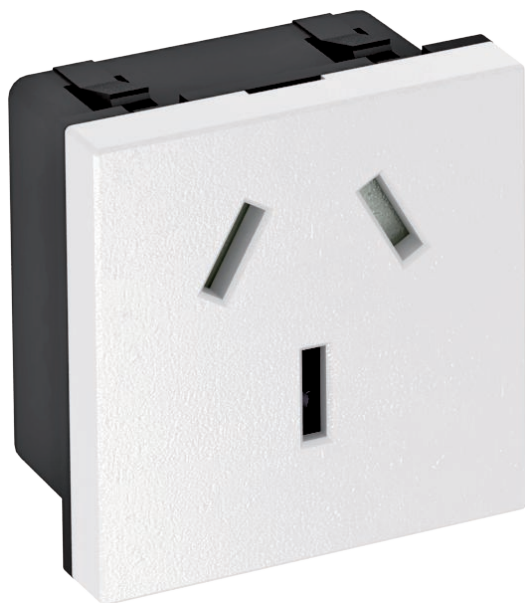


Technical data sheet

0° socket, China, 16 A, single

Item no. 6120742



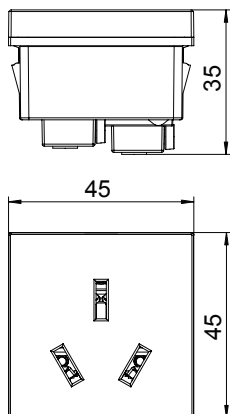
Socket, single 0°, China, with increased touch protection, with screw terminals, 2-pin, 16 A, 250 V \sim .

PC Polycarbonate

Master data

Item no.	6120742
Type	STD-CN0A16 RW1
Description 1	Socket 0°, single
Description 2	China, 16A
Dimension	250V, 16A
Colour	Pure white
RAL number	9010
Material	Polycarbonate
Material symbol	PC
Smallest sales unit (VG)	1 Piece
Weight	4,10 kg/100 pc.

Technical data



Width	45,00 mm
Height	45,00 mm
Depth	35,00 mm
Cover	Central plate
Closable	<input type="checkbox"/>
Connection type	Screw terminal
Printed label/coding	Without printing
Version	single 0°
Version	Socket 0°, single, China, 16A
Surface version	Matt
Sockets/switch version	Other
Version for	Other
Number of poles	2
Number of units	1
Number of switchable sockets	0
Ejection mechanism	<input type="checkbox"/>
Fastening type	Lock
Labelling panel	<input type="checkbox"/>
Operating temperature	-5,00 - 40,00 °C
Error current protection	<input type="checkbox"/>
For more difficult conditions (according to VDE)	<input type="checkbox"/>

Technical data sheet

0° socket, China, 16 A, single

Item no. 6120742



Technical data

Halogen-free	<input checked="" type="checkbox"/>
Increased touch protection	<input checked="" type="checkbox"/>
Hinged cover	<input type="checkbox"/>
Warning light	<input type="checkbox"/>
With on/off switch	<input type="checkbox"/>
With fine-wire fuse	<input type="checkbox"/>
With functional lighting	<input type="checkbox"/>
With orientation lighting	<input type="checkbox"/>
Mounting type	Device installation duct
Nominal voltage	250,00 V
Nominal current	16,00 A
Protection rating	Other
Special power supply	Without special power supply
Socket angle	0°
Transparent	<input type="checkbox"/>
Surge protection	<input type="checkbox"/>
Rotated central insert	<input type="checkbox"/>