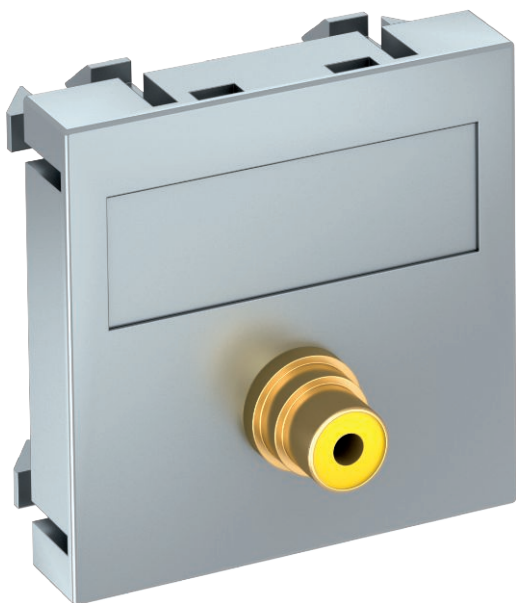


# Technical data sheet

## Video cinch connection, 1 module, straight outlet, as soldered connection

Item no. 6104976



Multimedia support with one cinch connection socket for composite video, straight cable outlet, with labelling panel, cinch socket (RCA) with soldered connection, colour coding yellow. Support plate with locking fastening, suitable for horizontal and vertical installation in the system environment.

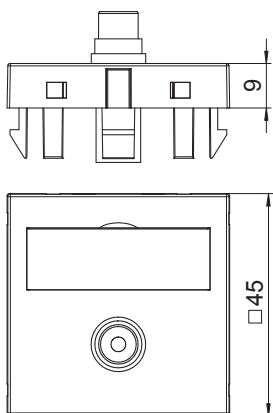
For installation in Rapid 45 device installation ducts, Rapid 80 device installation ducts, service poles and underfloor systems.

**PC** Polycarbonate

### Master data

Item no.	6104976
Type	MTG-R L AL1
Description 1	Multimedia support video cinch
Description 2	1xsocket with sold. connection
Dimension	45x45mm
Colour	Aluminium-painted
Material	Polycarbonate
Material symbol	PC
Smallest sales unit (VG)	1 Piece
Weight	1,50 kg/100 pc.

### Technical data



Dimension	45 x 45 mm
Surface version	Matt
Number of units	1
Fastening type	Lock
Halogen-free	<input checked="" type="checkbox"/>
Hinged cover	<input type="checkbox"/>
Lamp-wire connector	<input type="checkbox"/>
With printed label	<input type="checkbox"/>
Mit Staubschutz	<input type="checkbox"/>
Protection rating	IP20
Support ring	<input type="checkbox"/>
Transparent	<input type="checkbox"/>
Use	Cinch
Strain relief option	<input type="checkbox"/>
Combination	Basic element with central cover plate