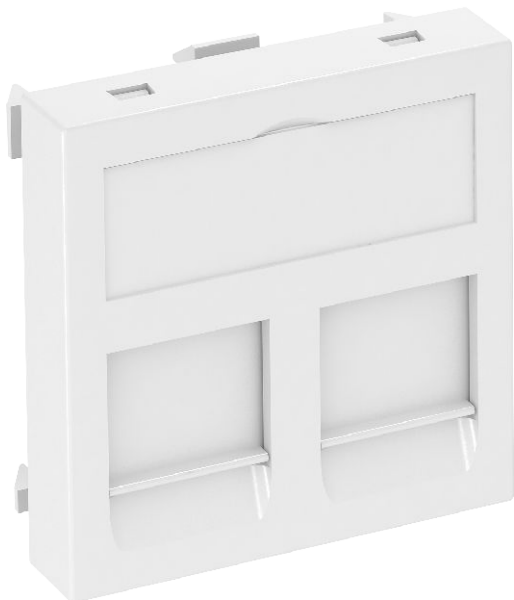


Technical data sheet

Data technology support, 1 module, straight outlet,
type PA
Item no. 6119226



Data technology support with straight outlet and locking slider to accept two data technology connection modules with RJ45 socket. The locking fastening is suitable for horizontal and vertical installation in the system environment. Type PA has a special module seat and is designed for indirect fastening of the data connection modules in the mounting opening.

The type PA data technology support is suitable for accepting the following data connection modules: Panduit: Mini-Com.

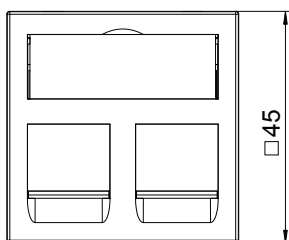
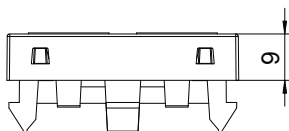
For installation in Rapid 45 and Rapid 80 device installation trunking, ISS service poles and underfloor systems.

PC Polycarbonate

Master data

Item no.	6119226
Type	DTG-2PA RW1
Description 1	Data technology support
Description 2	f. 2 connection modules type P
Dimension	45x45mm
Colour	Pure white
RAL number	9010
Material	Polycarbonate
Material symbol	PC
Smallest sales unit (VG)	1 Piece
Weight	1,10 kg/100 pc.

Technical data



Width	45,00 mm
Height	45,00 mm
Depth	9,00 mm
Dimension	45 x 45 mm
Surface version	Matt
Number of units	1
Fastening type	Lock
Labelling panel	With labelling panel
Halogen-free	<input checked="" type="checkbox"/>
Hinged cover	<input type="checkbox"/>
Lamp-wire connector	<input type="checkbox"/>
With printed label	<input type="checkbox"/>
Mit Staubschutz	<input checked="" type="checkbox"/>
Mounting opening	Type PA
Protection rating	IP20
Support ring	<input type="checkbox"/>
Transparent	<input type="checkbox"/>
Use	Installable data connector
Strain relief option	<input type="checkbox"/>
Combination	Basic element with central cover plate