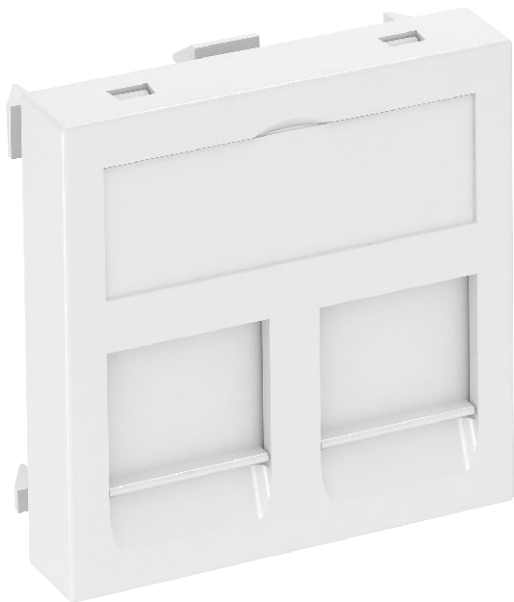


# Technical data sheet

Data technology support, 1 module, straight outlet,  
type EP  
Item no. 6119232



Data technology support with straight outlet and locking slider to accept two data technology connection modules with RJ45 socket. The locking fastening is suitable for horizontal and vertical installation in the system environment. Type EP has a special module seat and is designed for indirect fastening of the data connection modules in the mounting opening.

The type EP data technology support is suitable for accepting the following data connection modules: Leoni Kerpen: MegaLine-Connect45 ELine.

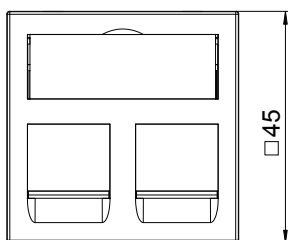
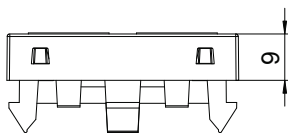
For installation in Rapid 45 and Rapid 80 device installation trunking, ISS service poles and underfloor systems.

**PC** Polycarbonate

## Master data

Item no.	6119232
Type	DTG-2EP RW1
Description 1	Data technology support
Description 2	f.2 connection modules type EP
Dimension	45x45mm
Colour	Pure white
RAL number	9010
Material	Polycarbonate
Material symbol	PC
Smallest sales unit (VG)	1 Piece
Weight	1,10 kg/100 pc.

## Technical data



Width	45,00 mm
Height	45,00 mm
Depth	9,00 mm
Dimension	45 x 45 mm
Surface version	Matt
Number of units	1
Fastening type	Lock
Labelling panel	With labelling panel
Halogen-free	<input checked="" type="checkbox"/>
Hinged cover	<input type="checkbox"/>
Lamp-wire connector	<input type="checkbox"/>
With printed label	<input type="checkbox"/>
Mit Staubschutz	<input checked="" type="checkbox"/>
Mounting opening	Type EP
Protection rating	IP20
Support ring	<input type="checkbox"/>
Transparent	<input type="checkbox"/>
Use	Installable data connector
Strain relief option	<input type="checkbox"/>
Combination	Basic element with central cover plate