

# Technical data sheet

Surface-mounted socket 0° with hinged cover,  
protective contact, single  
Item no. 6109873



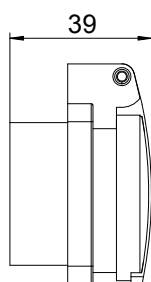
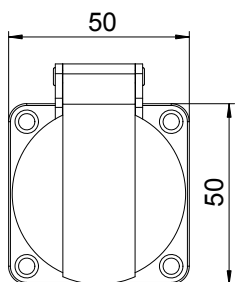
Protective contact extension socket 0° with hinged cover, with screwless terminals, 2-pin, 16 A, 250 V~, with connection terminals to IEC 60884-1. Protection rating: IP44.

CE

## Master data

Item no.	6109873
Type	ASD-DO SW
Description 1	Socket single, 0°
Description 2	prot. contact w. hinged cov.
Dimension	50x61 mm
Colour	Black
Smallest sales unit (VG)	1 Piece
Weight	4,80 kg/100 pc.

## Technical data



Length	50,00 mm
Width	50,00 mm
Height	39,00 mm
Connection type/component	schraublose Klemme
Flange dimension	50 x 50 mm
For more difficult conditions (according to VDE)	<input type="checkbox"/>
Halogen-free	<input type="checkbox"/>
Nominal voltage	250,00 V
Nominal current	16,00 A
Protection rating	IP44
Direction of insertion	Straight