



# UDHOME and GES R2

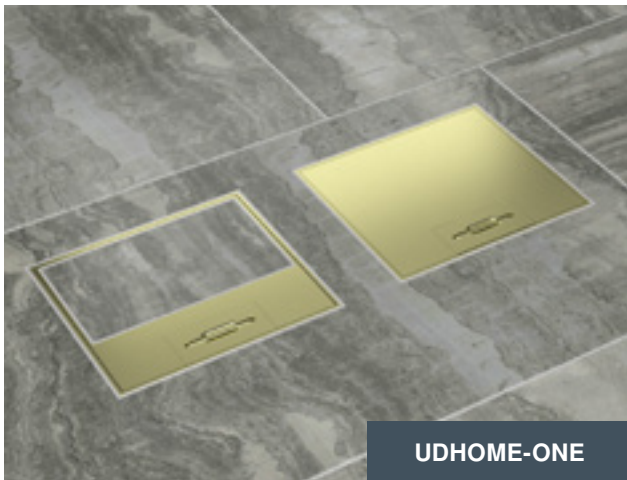
OBO complete solutions for flexible underfloor installations

# UDHOME floor sockets and floor boxes



## For perfect power and data

The UDHOME complete units bring power, data and multimedia technology to precisely where they're needed. Floor sockets and floor boxes of the UDHOME range are mounted directly on the raw floor and connected with flexible installation pipes – it couldn't be simpler.



UDHOME-ONE



UDHOME2



UDHOME4



UDHOME9

## Elegant, discreet and robust

Thanks to their elegant, discreet design, UDHOME floor sockets and floor tanks integrate themselves seamlessly into the interior architecture. When the hinged cover is closed, only the high-quality surfaces of pure stainless steel or solid brass are visible. Thanks to their stable construction, the floor sockets and floor tanks are also resistant to the everyday loads in homes, offices and administrative areas.



Simple handling, from ordering to installation



High-quality materials and solid machining



Maximum flexibility in equipment



Manufactured using energy from renewable sources



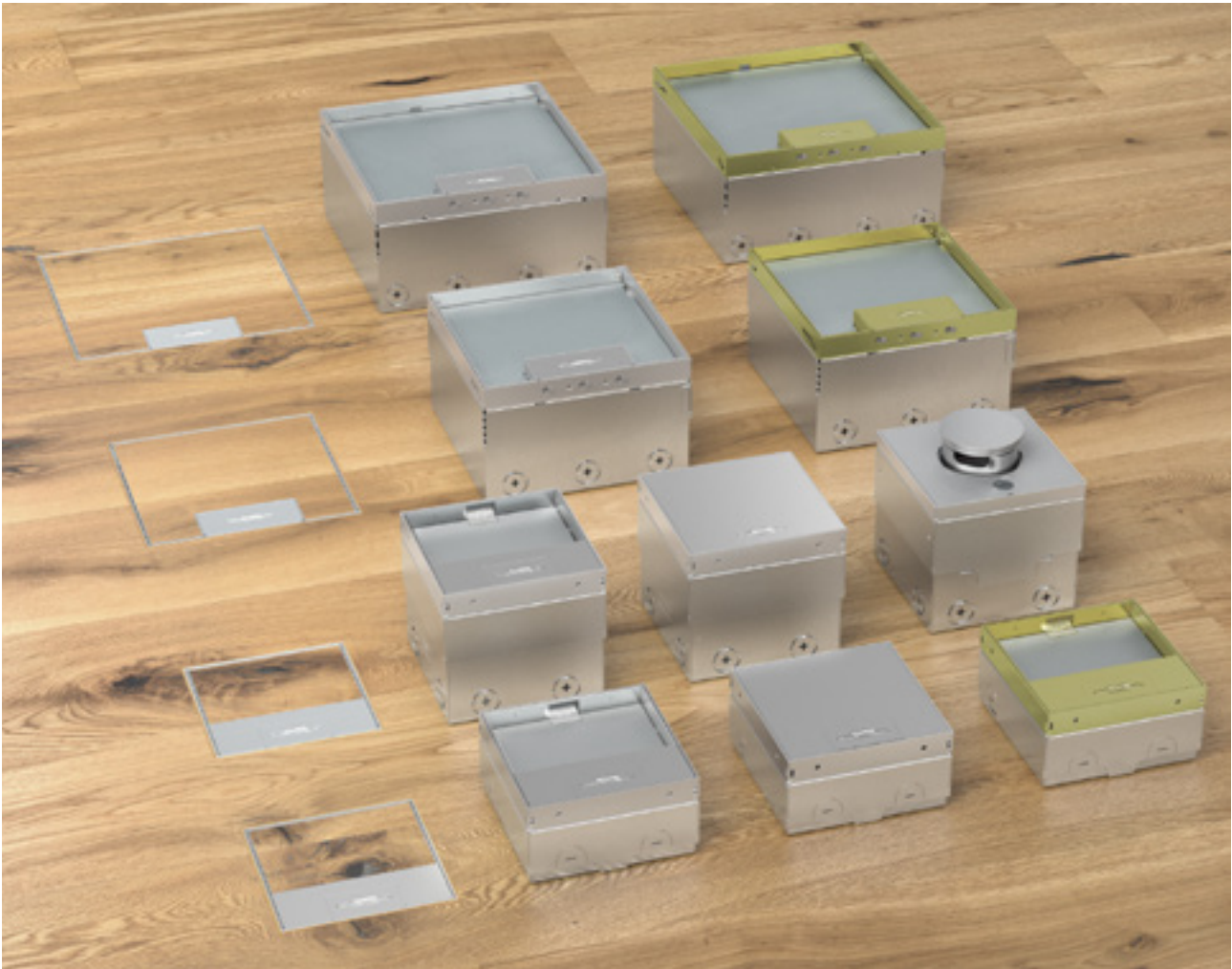
## A special customer: An old master in a new light

**Architect: Michele de Lucchi**  
**Museo della Pietà**

The Museo della Pietà museum in Milan is home to the last, uncompleted masterpiece by Michelangelo: the Pietà Rondanini. The 89-year-old master worked on the sculpture, which depicts Jesus and Mary, just six days before his death in February 1564. The compact UDHOME floor sockets and a special solution of OKA underfloor trunking from OBO Bettermann provide a discreet and flexible power supply around the famous sculpture.



# Overview of the UDHOME series



## Floor boxes

The UDHOME4 and UDHOME9 floor boxes are the ideal solution for a wide equipment range and dry-cleaned floor coverings. The floor boxes offer a lot of space for the installation of power, data and multimedia connections and are available in discreet stainless steel and in stylish brass.

## Floor sockets

The UDHOME-ONE and UDHOME2 floor sockets, with their dimensions of 140 x 140 mm, combine an elegant appearance and functionality. These two small floor sockets are suitable for both dry- and wet-care floors. Stainless steel or brass are used as materials.





# Floor structure

Thanks to their compact design, UDHOME floor sockets and floor boxes require considerably less space and are separate from other electrical installation systems in the floor.

## Height adjustment to floor height

The frames of the UDHOME-ONE and UDHOME2 can be adjusted to the edge of the floor covering using four integrated height-adjustment supports. The height-adjustment range of the UDHOME-ONE is always 75–105 mm, regardless of the type of cover. The height-adjustment range of the UDHOME2 is 100/110–135 mm, depending on the cover version. With higher floor structures, a height extension can be mounted – the additional height-adjustment range is: 10–60 mm.



## Tested quality

OBO tests its ducts, trunking and underfloor sockets in its own BET Test Centre. Thus, special solutions can be tested for their load capacity within a very short time.



## Simple infeed

The feeding in of cables is not complex at all. They are simply run in flexible empty tubes in the screed up to the UDHOME.





# The UDHOME-ONE floor socket

For use in thin screeds

The smallest and most sustainable member of the product family – even flatter and more energy-efficient thanks to the higher heating dynamic.

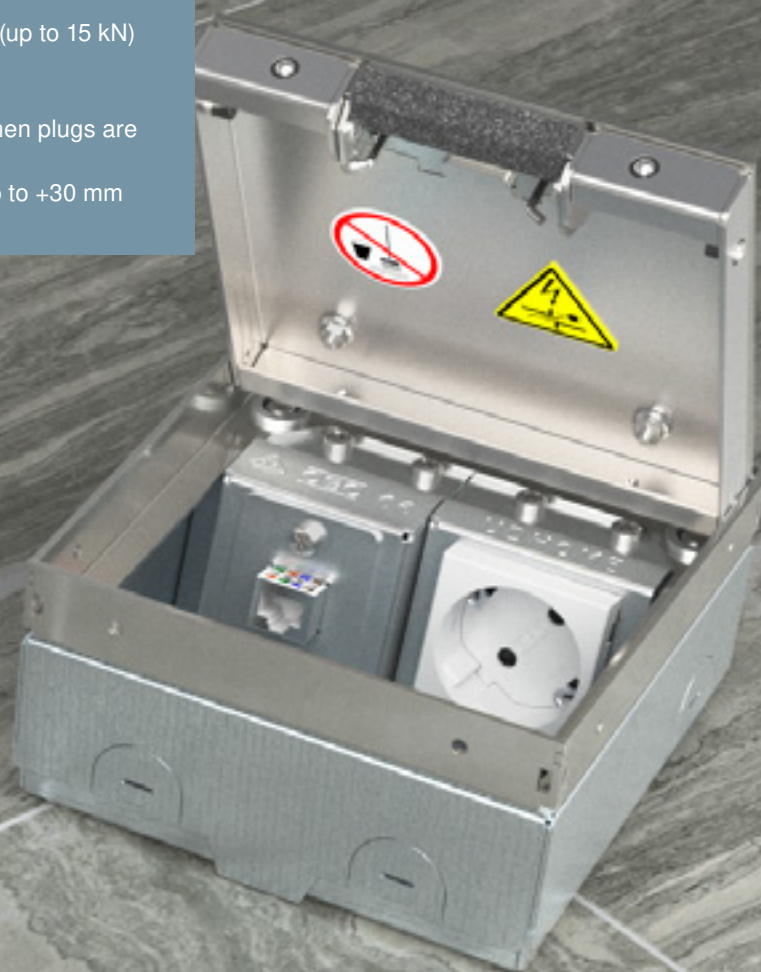
## Space-saving floor installation

The floor sockets are mounted directly on the raw floor (RFB), connected with flexible installation pipes and then worked flush into the screed. Thanks to the height-adjustment mechanism, the UDHOME-ONE can also be installed in floors of up to 105 mm high.



## The advantages at a glance:

- Can be used in thin screeds from 75 mm
- Sustainable thanks to energy-saving heating in thin screeds
- High load-bearing capacity (up to 15 kN)
- Flexible equipment
- VDE-certified
- Cover can still be closed when plugs are plugged in
- Height-adjustment range up to +30 mm



## Device installation – flexible equipment

The floor socket is available with either one data and one power connection or with two power connections. The power connection is made using the Modul 45® series. The cover can still be closed, no matter which connector type is used. At the same time, it is available in two different versions: with floor covering recess (15 mm) and with a decorative plate.

# UDHOME2 floor socket

Small but perfect

The UDHOME2 floor socket is available with a decorative cover and floor covering recess in stainless steel or brass. With its protection rating of IP45, the UDHOME2 floor socket with tube body and stainless steel cover is even suitable for use in wet-cleaned floors.

## Cover and cord outlet

The larger cord outlet for optimal cable exits can now be opened easily using the handle. The cover closes with a gentle click and can be used flexibly in all directions.





## Device installation

The scope of delivery for the UDHOM2 contains a double protective contact socket. Up to 2 modular data sockets can be installed with the mounting supports. The installation space allows all connector types to be used. This means that it is possible to close the cover during use.

# Flexibility that can hold its own

Only OBO gives you the choice – because we are continuously working to make sensible enhancements to existing products, to make them even better. The best example of this: As the only manufacturer on the market, OBO Bettermann is able to offer design surfaces for floor sockets that are ready for installation.

With the six high-quality, contemporary decorative designs, you can match the installation of electrical systems even more harmoniously to existing floor coverings and individual room designs! And this not only looks good. The newly designed covers for the square floor sockets can also be positioned by users in any direction, meaning the cord outlet is always facing the direction in which it is required.





# The new UDHOME design surfaces

Decoration	Item number	Type	Design	Suitable for*
	7368221	UDHOME-ONE GV D1	Angelhair	1 Modul 45 device + 1 data connection
	7368261	UDHOME2 GV D1	Angelhair	2 Modul 45 devices + 2 data connections
	7368222	UDHOME-ONE GV D2	Spots	1 Modul 45 device + 1 data connection
	7368262	UDHOME2 GV D2	Spots	2 Modul 45 devices + 2 data connections
	7368223	UDHOME-ONE GV D3	Cross hatch	1 Modul 45 device + 1 data connection
	7368263	UDHOME2 GV D3	Cross hatch	2 Modul 45 devices + 2 data connections
	7368224	UDHOME-ONE GM D1	Marygold	1 Modul 45 device + 1 data connection
	7368264	UDHOME2 GM D1	Marygold	2 Modul 45 devices + 2 data connections
	7368225	UDHOME-ONE GM D2	Oriental	1 Modul 45 device + 1 data connection
	7368265	UDHOME2 GM D2	Oriental	2 Modul 45 devices + 2 data connections
	7368226	UDHOME-ONE GM D3	Hammer blow	1 Modul 45 device + 1 data connection
	7368266	UDHOME2 GM D3	Hammer blow	2 Modul 45 devices + 2 data connections

*\*All the above products are delivered without installation devices. Please order sockets, data boxes, multimedia and other devices from our extensive Modul 45 range separately.*

## Patented safety

Even more variety: The UDHOME-ONE and UDHOME2 floor sockets are now also available in a variant with a brush outlet – both with and without a floor covering recess in the cover. This variant is certified and designed for Europe-wide use. Their specially brushed stainless steel surface stands out through its uniform appearance, making it an elegant, discreet solution for a wide range of room concepts. The VDE-compliant cord outlet opening can be closed simply if the floor sockets are not in use. In the used state, the cables are run over the bar flush with the floor. The patented brush bar also offers a clear, discreet design, which – thanks to the flat opening lever – blends into existing interiors flexibly and harmoniously. This means safe electrical installations in your properties are ensured that meet both aesthetic and functional requirements.





# UDHOME cover with brush outlet and brushed stainless steel surface

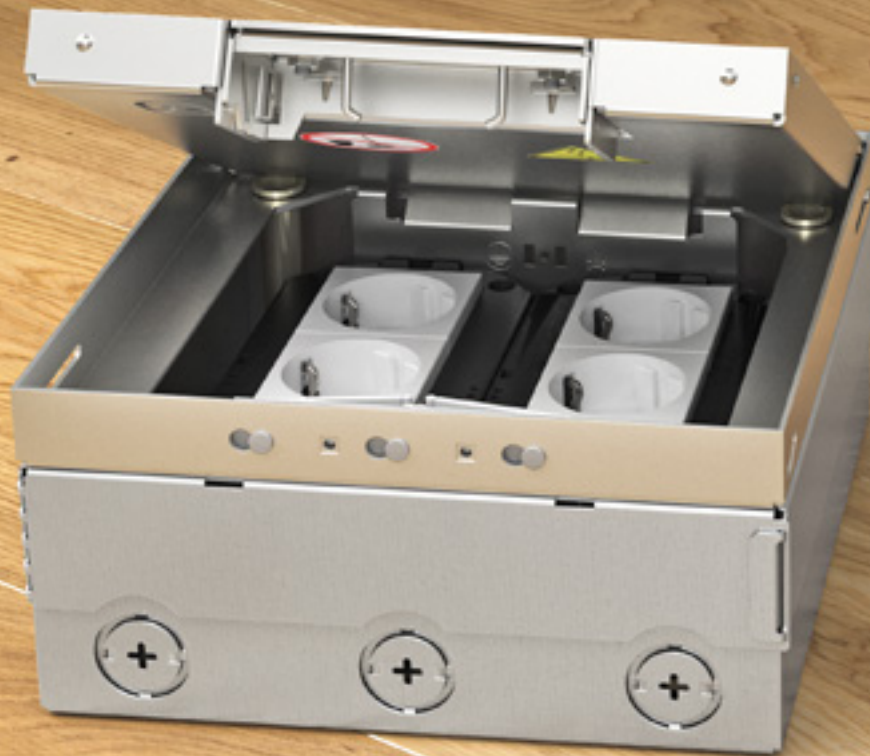
Item number	Type	Design	Suitable for*
7368356	UDHOME-ONE BN	With brush outlet, decorative plate	1 Modul 45 device + 1 data connection
7368352	UDHOME2 BN	With brush outlet, decorative plate	2 Modul 45 devices + 2 data connections
7368357	UDHOME-ONE BN15	With brush outlet, floor covering recess	1 Modul 45 device + 1 data connection
7368353	UDHOME2 BN15	With brush outlet, floor covering recess	2 Modul 45 devices + 2 data connections

*\*All the above products are delivered without installation devices. Please order sockets, data boxes, multimedia and other devices from our extensive Modul 45 range separately.*



# The UDHOME4 floor box

For a wide range of equipment



## Device installation

The UDHOME4 can be equipped flexibly with power, data and multimedia technology using 4 support ring devices or 6 Modul 45® devices.





## Height adjustment

The UDHOME has a height-adjustment range of up to 30 mm and can thus be adjusted to the level of the finished floor.



## Design

The UDHOME4 can fit neatly into high-quality interior architecture. All that is visible is a slender metal edge and the cord outlet. The floor box is available in stainless steel or brass versions.

# The UDHOME9 floor box

A refined appearance, with high levels of equipment



## Device installation

The UDHOME9 can be equipped flexibly with power, data and multimedia technology using 9 support ring devices or 12 Modul 45® devices.





## Changeable

The UDHOME9 is available in stainless steel and brass versions.

## Installed

The UDHOME9 is the largest floor box of the UDHOME family. It combines unobtrusive design with a wide range of use options.

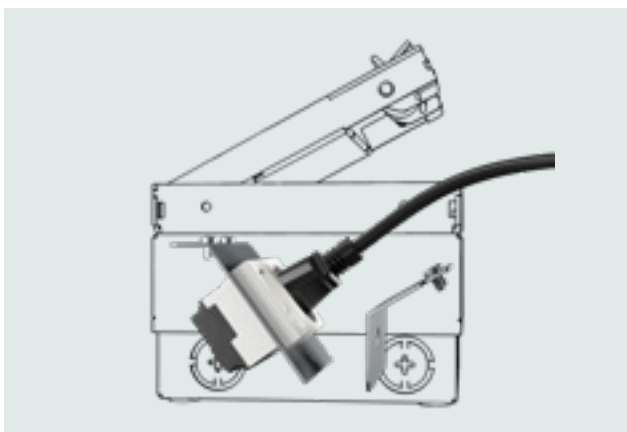
# Device installation

The UDHOME range can be equipped flexibly with power, data and multimedia technology. Our extremely comprehensive Modul 45® programme is available for this. However, you can also use standard devices from other manufacturers.



## UDHOME-ONE device installation

The UDHOME-ONE floor sockets are preconfigured with VDE devices. A variant with an empty mounting support is also available. Various data technology plates are available for the mounting of the data technology modules. A double Modul 45® mounting support is available as an accessory for the refitting of a UDHOME-ONE at a later time.



## UDHOME2 device installation

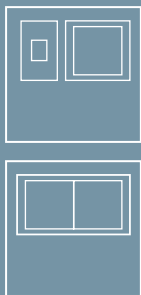
You can order the UDHOME2 floor sockets pre-equipped with a VDE double socket. There is also a version with an empty mounting support for equipping individually. The installation space of the new UDHOME2 enables the cover to be closed, even when fully loaded with up to 4 connection cables. In addition, up to 2 data connection modules can be installed in a support, which must be ordered separately.



## Device installation in UDHOME4 and UDHOME9

The UDHOME4 and UDHOME9 floor boxes are available in different pre-configurations. A specific item number indicates that a triple socket is built into the UDHOME. To meet project-specific requirements, the empty installation spaces of the universal support can be supplemented with additional sockets or data and multimedia technology thanks to the comprehensive Modul 45® product range.





### UDHOME-ONE floor socket

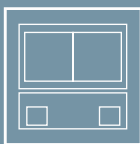
140 x 140 mm  
1 Modul 45® device  
1 data technology module



Pre-equipped with:  
1x Modul 45® socket  
1x data technology blanking plate



Data technology plate for optional installation of a data technology module. A mounting support to accept up to 2 Modul 45® installation devices is available as an option.

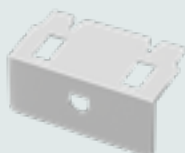


### UDHOME2 floor socket

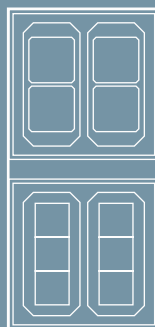
140 x 140 mm  
2 Modul 45® devices  
1 data technology module



Pre-equipped with:  
2x Modul 45® sockets



Mounting support for data technology for the optional installation of 2 additional data technology modules



### UDHOME-ONE floor socket

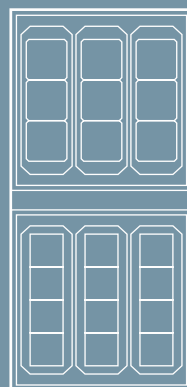
199 x 199 mm  
4 support ring devices  
6 Modul 45® devices



Freely equippable with up to 4 accessories



Option 2: Installation of up to 4 devices when equipped with 2 support ring device supports



### UDHOME-ONE floor socket

243 x 243 mm  
4 support ring devices  
12 Modul 45® devices



Freely equippable with up to 12 accessories



Option 2: Installation of up to 9 devices when equipped with 3 support ring device supports

# GES R2 floor sockets



## A high load capacity and varied functionality

The round floor sockets of the GES R2 series supply data and power exactly where they are required. Their handling is simple. The connection cables are inserted in the compact connection space, which is closed off with a cover. Depending on the cover version, the floor sockets are suitable for dry- or wet-care floors indoors. The GES R2 installation socket is pre-equipped with two sockets. As an option, to the side of the socket there is space for up to two connection sockets for data technology applications.





## Areas of application

OBO GES R2 floor sockets are an ideal underfloor solution when a discreet appearance, a high load capacity and varied functionality are required. Whether in a living room or in public areas – such as foyers, shopping centres or exhibition areas – the floor sockets stand out through their fine design, and also add value to high-quality floor areas.

The floor sockets of the GES R2 series are available in various materials. The die-cast zinc variant is surface-treated and available in the shades old copper, old brass, chrome, nickel, nickel-oxidised and deep black, and certified to IP66 (protection against dust and strong water jets) in the unused state.



Ideally suited to wet-care floors



Withstands the highest loads



In use around the world for decades



# Modular structure

Simple configuration, according to the area of application

The modular structure as a service outlet, installation socket and screed box allows simple configuration, according to the area of application.

## Service outlet

The classic service outlet for the GES R2 floor socket is available in various designs.

## Installation socket

The installation socket is available empty or pre-equipped. The pre-equipped variant contains either a double socket or a free combination of two Modul 45 individual devices.

## Screed box

The height-adjustable screed box is used to accept the installation socket when the GES R2 floor socket is installed in the screed.





# Installation in system floors

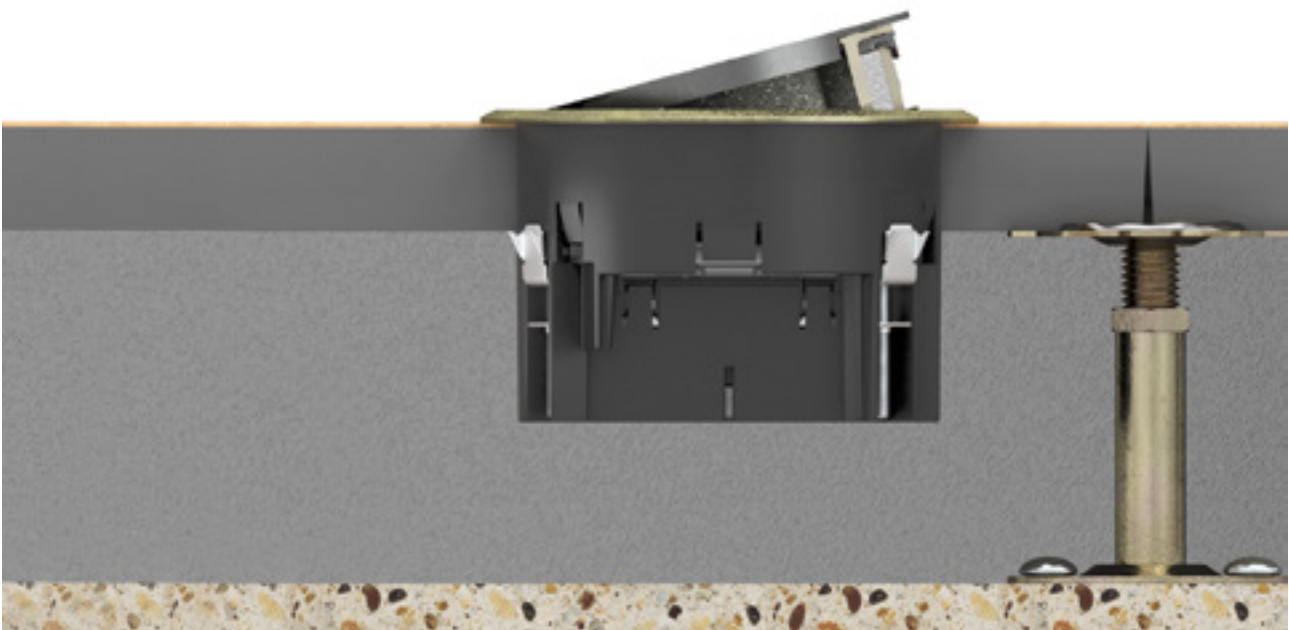


## Variable

All the cover variants of the GES R2 floor socket can be inserted in raised floors or in the screed.

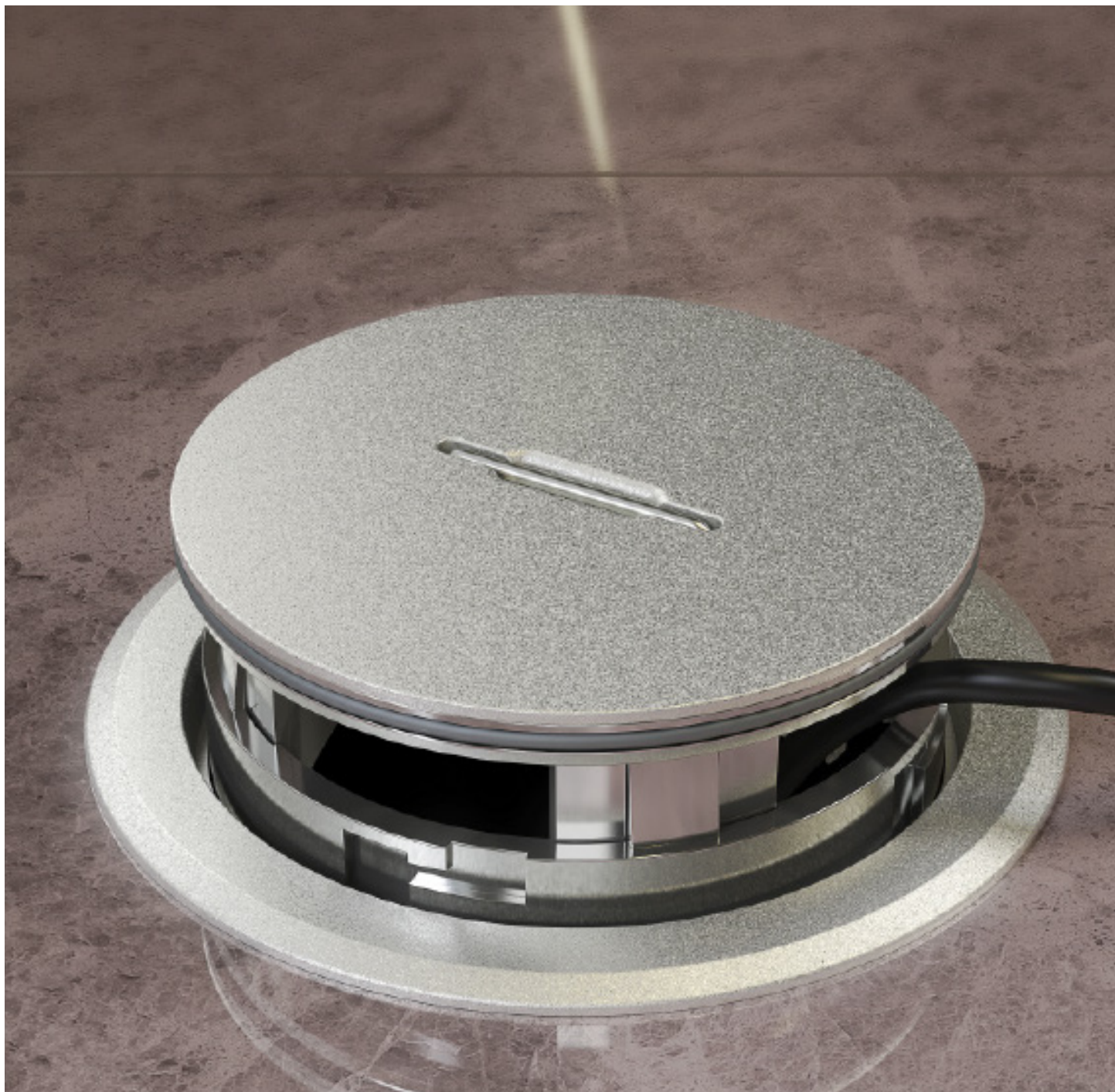
## Installation in raised floors

The installation socket is mounted in the raised floor plate using three fastening brackets.



## For wet-cleaned floors

GES R2 floor socket made of die-cast zinc



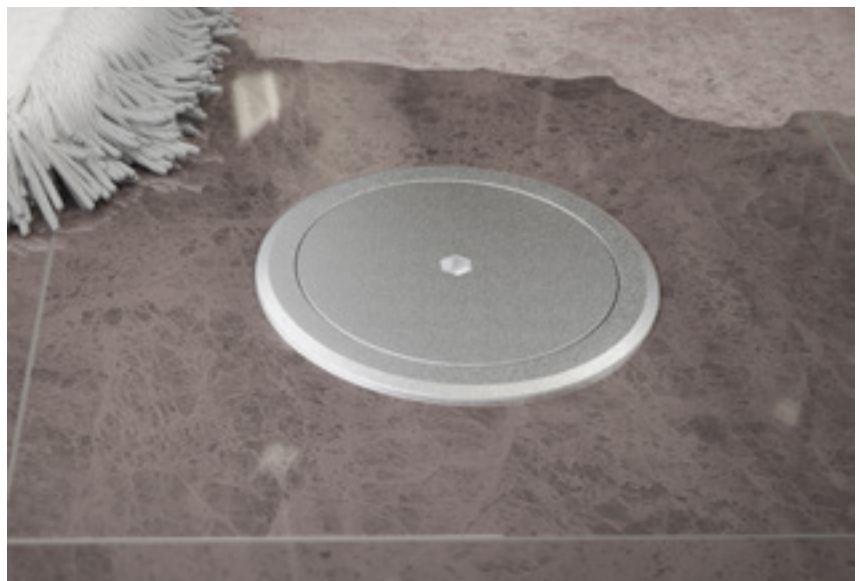
The tube body can be operated with one hand. To open it, the handle clamp is pulled up and, after the audible engaging of the support, turned slightly to the left and locked. To insert the cables, it is sufficient to press two pressure points to release the cover. After the connectors have been inserted, the cover is audibly engaged on the tube body ring. The tube

body cover is closed again by pressing two opposing pressure points and half lowering the cover. The tube body is then turned slightly to the right to make it flush with the floor.



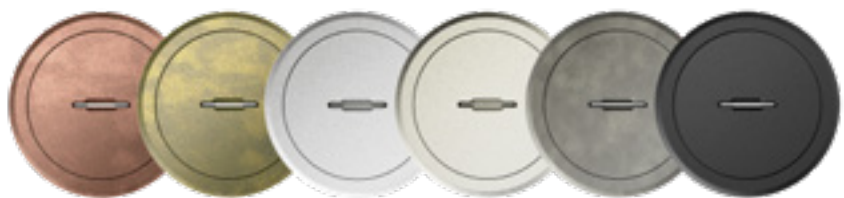


The tube body seals the closed installation space against the ingress of water, which occurs, for example, when the floor is cleaned. Even if the tube body cover is open for letting out cables, a seal in the lower ring of the installation socket offers protection against the ingress of water. The GES R2 floor socket with tube body thus fulfils the requirements for service outlets in wet-care floors according to EN 50085-2-2 and is certified to IP66 in the unused state.



## Blank version with metal cover

The metal cover with bayonet lock can be opened with an Allen key. This version is particularly suitable for public areas and for the supply of temporary installations.



## Surfaces

The GES R2 floor socket with tube body stands out through its compact shape and discreet design. Six high-quality surfaces are available: old copper, old brass, chromium, nickel, nickel-oxidised and jet black.

## For wet-cleaned floors

GES R2 floor socket made of die-cast zinc

The GES R2 floor socket with hinged cover stands out through its fine design. It is the perfect solution for high-quality floor coverings, which are dry- or wet-cleaned.







## Hinged cover

The locking function of the hinged cover allows a secure outlet for the cable routing. When closed, the floor socket is even suitable for wet care.



## Surfaces

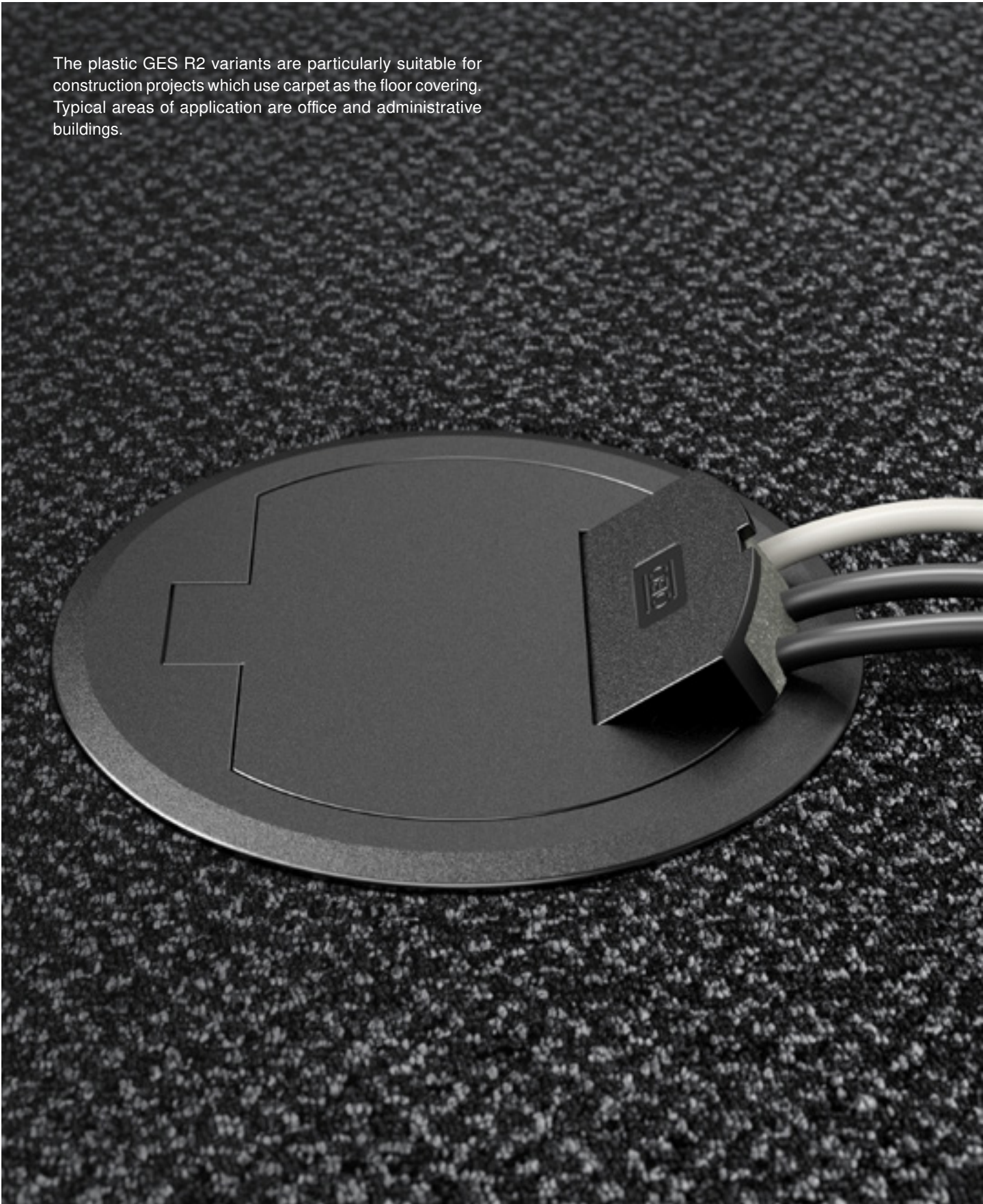
The version with hinged cover is available in the colours old copper, old brass, chrome, nickel, nickel-oxidised and jet black.



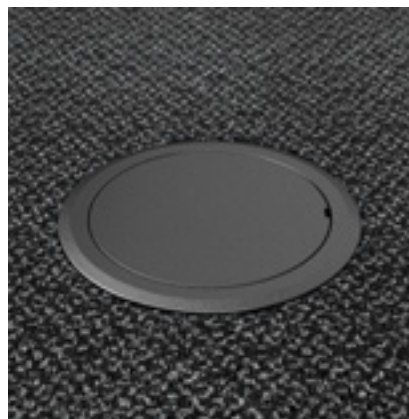
# For dry-cleaned floors

## Plastic GES R2 floor socket

The plastic GES R2 variants are particularly suitable for construction projects which use carpet as the floor covering. Typical areas of application are office and administrative buildings.







## Cover versions

Two cover variants are available. The cover variant with cord outlet provides a permanent cable outlet to supply the electrical resources. The version with blanking cover, which can only be opened with a screwdriver, protects against unintentional third-party access.

## Protective frame

The floor covering protection frame protects the carpet against damage and prevents wear at the cut edges of the carpet.



## Colours

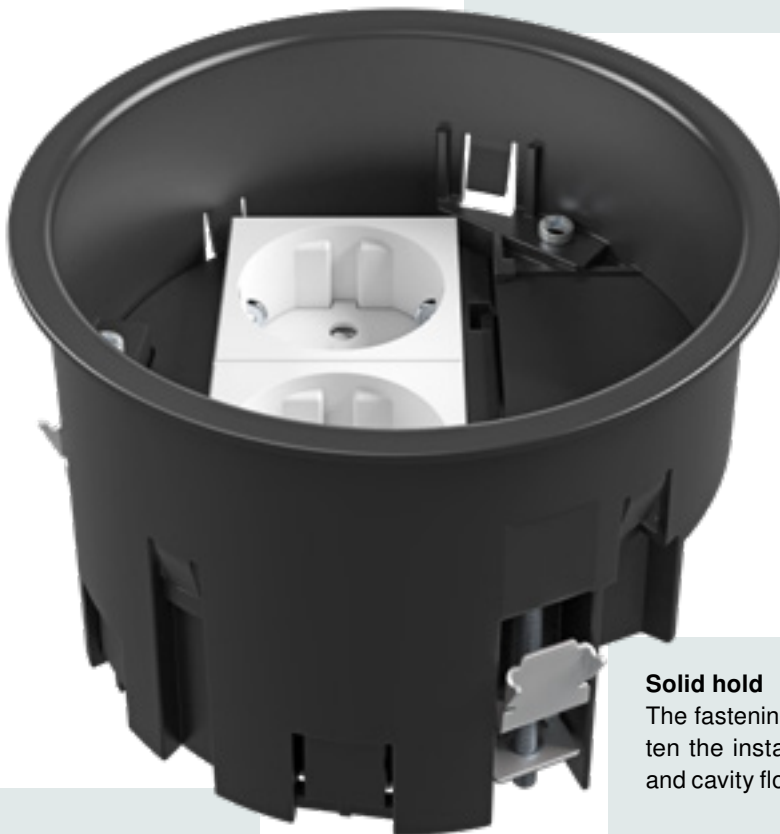
The plastic floor sockets are available in the colours iron grey or graphite black.

# Installation socket for Modul 45®

The installation socket for GES R2 service outlets accepts Modul 45® devices. After the routing of the electrical installation, the installation socket is inserted in the screed box.

## Separation of different current types

The installation socket offers separated installation spaces for heavy current connections and data or multimedia connections.



## Functional

The installation socket possesses break-out cable entries and integrated strain relief.

## Solid hold

The fastening bracket is used to fasten the installation socket in raised and cavity floors or in the screed box.

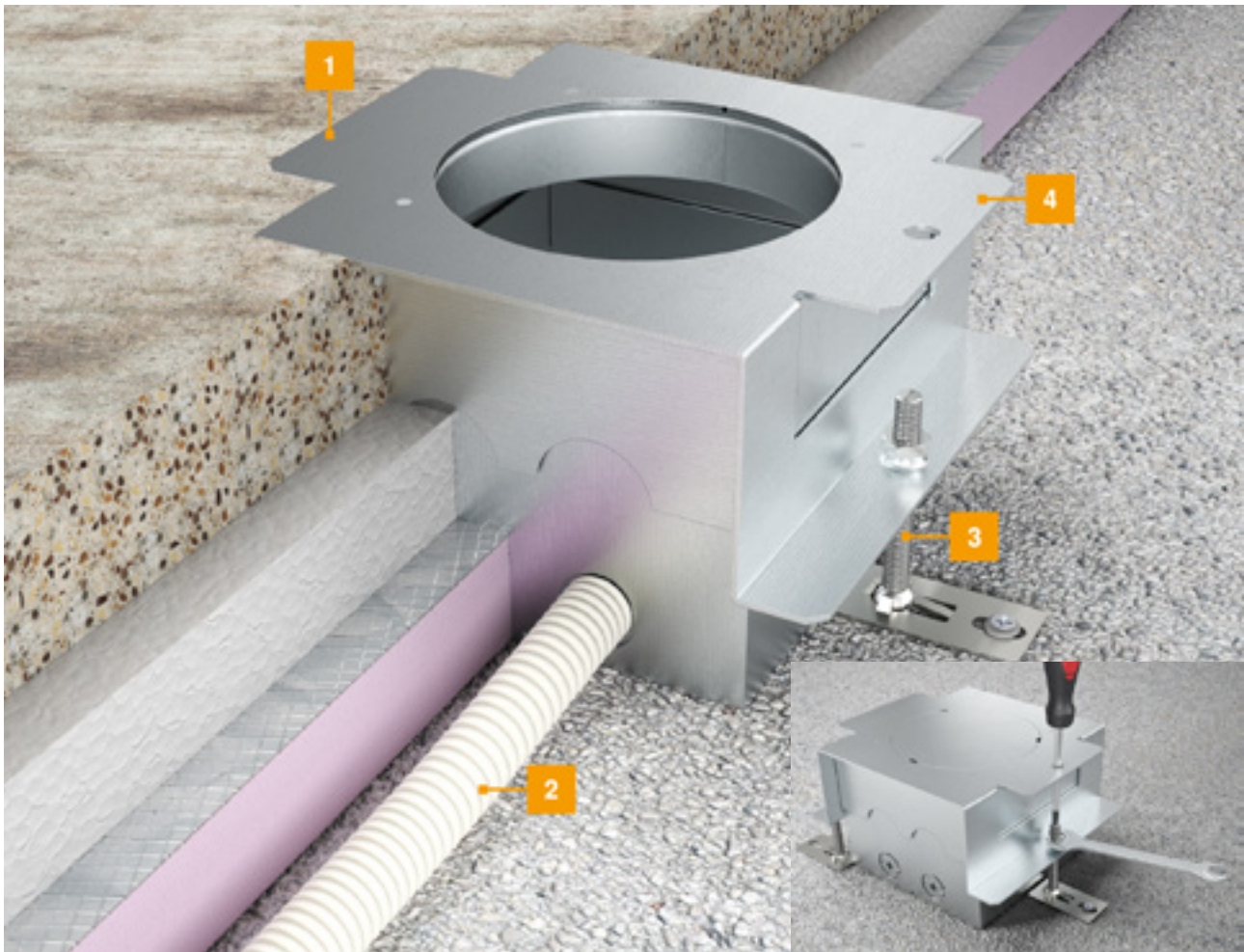


## Varied installation options

The pre-equipped installation socket, which contains a double socket of the Modul 45® series, is suitable for standard applications. The variant for two single Modul 45® devices offers a great amount of installation flexibility. The installation space is separated here. This allows simultaneous installation of two sockets and two multimedia connections, such as HDMI, VGA or data technology.



# Mounting of the underfloor socket in the screed



## **1 Installation in the screed socket**

The GES R2 floor sockets are installed in the screed in the compact screed socket. The screed box possesses a stable pressure acceptance plate, the frame of which serves as the screed drip edge. The mounting protection cover of the screed box is knocked out after the screed work has been completed. This makes the installation opening for the service outlet accessible.

## **2 Connection**

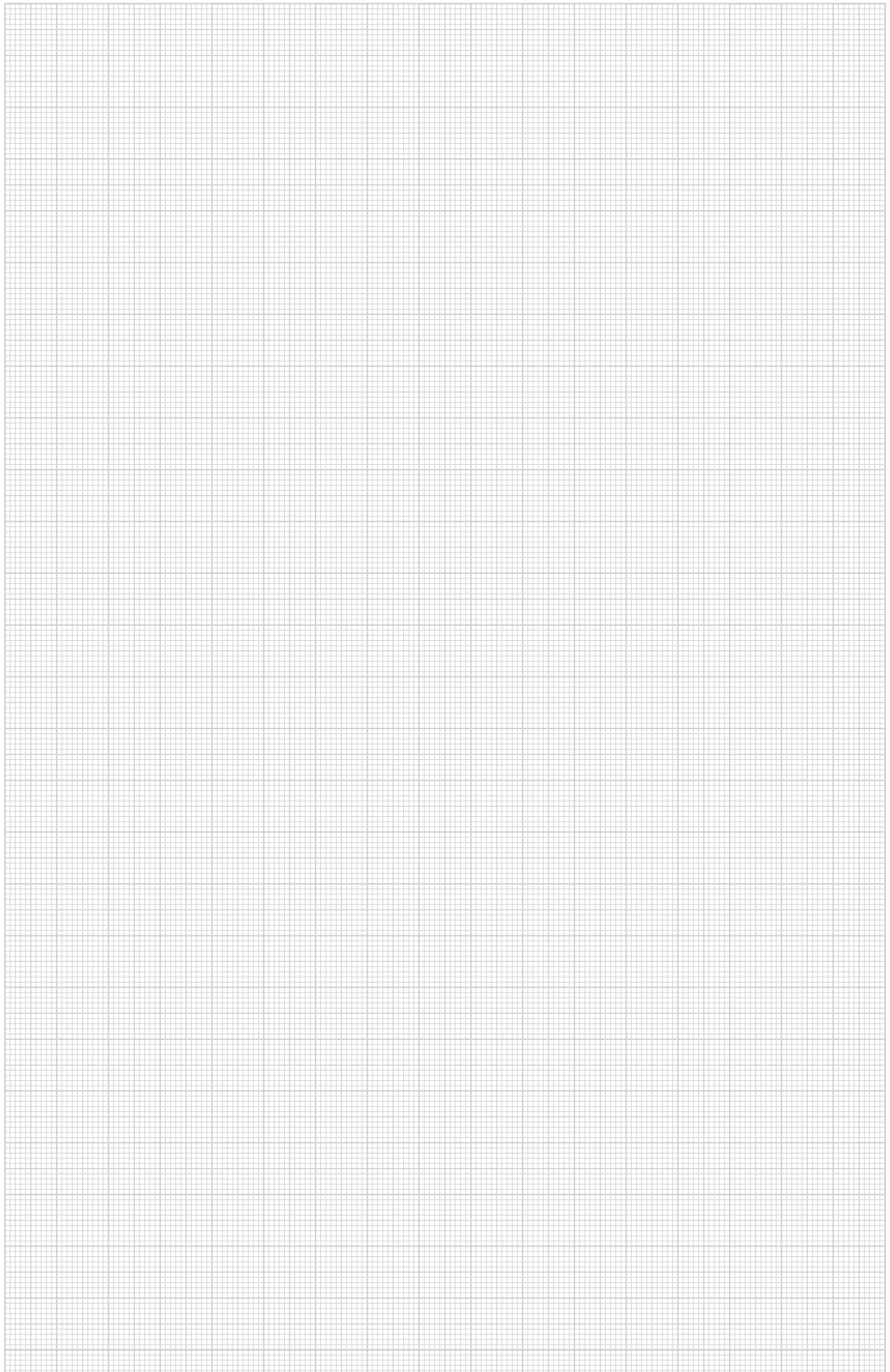
Cables are routed via flexible installation pipes in the insulation layer of the screed construction. The screed box possesses four break-out pipe insertions, either for M20 or M25 pipes.

## **3 Height adjustment**

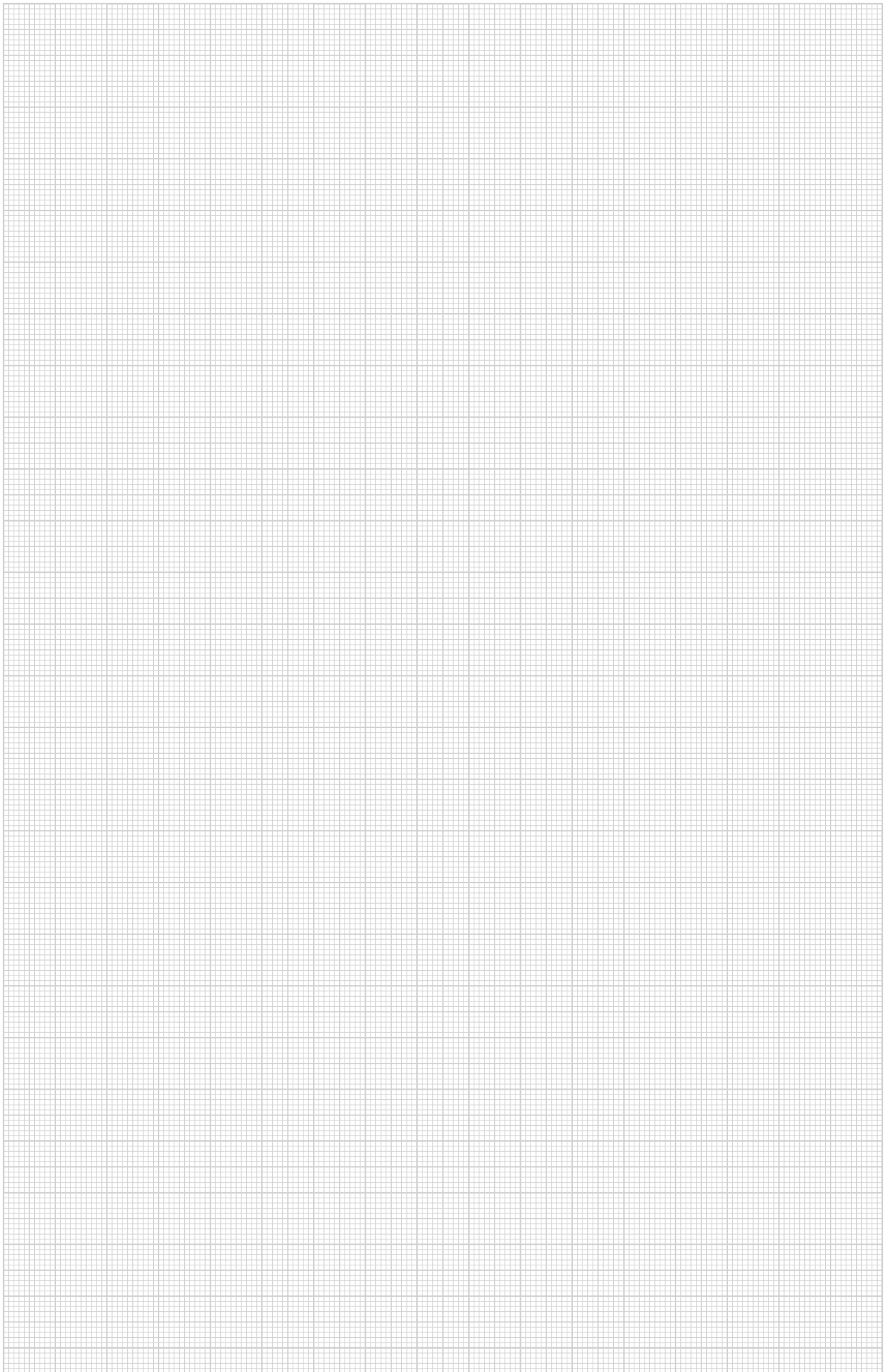
Using a simple 3-point height adjustment, the screed box can be adjusted exactly to the top edge of the screed. The height-adjustment range is 85 to 130 mm.

## **4 Screed-flush drip edge**

The drip edge of the screed box ensures sufficient stability and load dissipation in the area. The installation socket and the service outlet are installed after the floor covering work has been carried out.







**OBO Bettermann Holding GmbH & Co. KG**  
P.O. Box 1120  
58694 Menden  
GERMANY

**Customer Service**  
Tel. +49 23 73 89-17 00  
[export@obo.de](mailto:export@obo.de)

[www.obo-bettermann.com](http://www.obo-bettermann.com)

© OBO Bettermann 05/2025 EN