



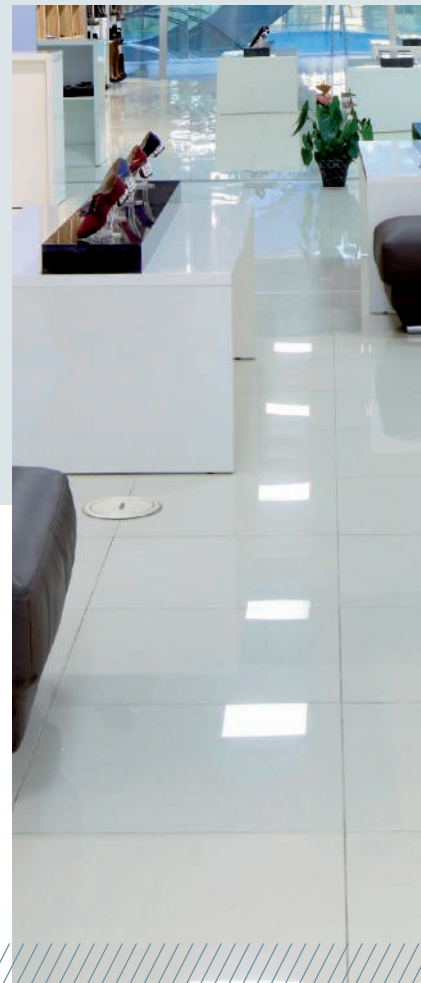
GES R2 floor sockets

Modular floor sockets for different conditions of use

A high load capacity and varied functionality

GES R2 floor sockets

The round floor sockets of the GES R2 series supply data and power exactly where they are required. Their handling is simple: The connection lines are inserted in the compact installation space and that space is closed off with a cover. Depending on the cover version, the floor sockets are suitable for dry or wet-cleaned floors.



Areas of application

OBO GES R2 floor sockets are an ideal underfloor solution when a discreet appearance, a high load capacity and varied functionality are required. Whether in the living room or in public areas – such as foyers, shopping centres or exhibition areas – the floor sockets stand out through their fine design and also add value to high-quality floor areas.



The installation socket of the GES R2 floor sockets is pre-equipped with two sockets. As an option, to the side of the socket there is space for up to two connection sockets for data technology applications.



The floor sockets of the GES R2 series are available in various materials. The die-cast zinc variant is surface-treated and available in the shades old copper, old brass, chrome, nickel, nickel-oxidised and deep black, and certified to IP66 (protection against dust and strong water jets) in the unused state.



Ideally suited to wet-cleaned floors



Withstands the highest loads



In use around the world for decades

Modular structure

Simple configuration, according to the area of application

The modular structure as a service outlet, installation socket and screed box allows simple configuration, according to the area of application.

Service outlet

The classic service outlet for the GES R2 floor socket is available in various designs.

Installation socket

The installation socket is available empty or pre-equipped. The pre-equipped variant contains either a double socket or a free combination of two Modul 45 individual devices.

Screed box

The height-adjustable screed box is used to accept the service outlet when the GES R2 floor socket is installed in the screed.



Installation in system floors

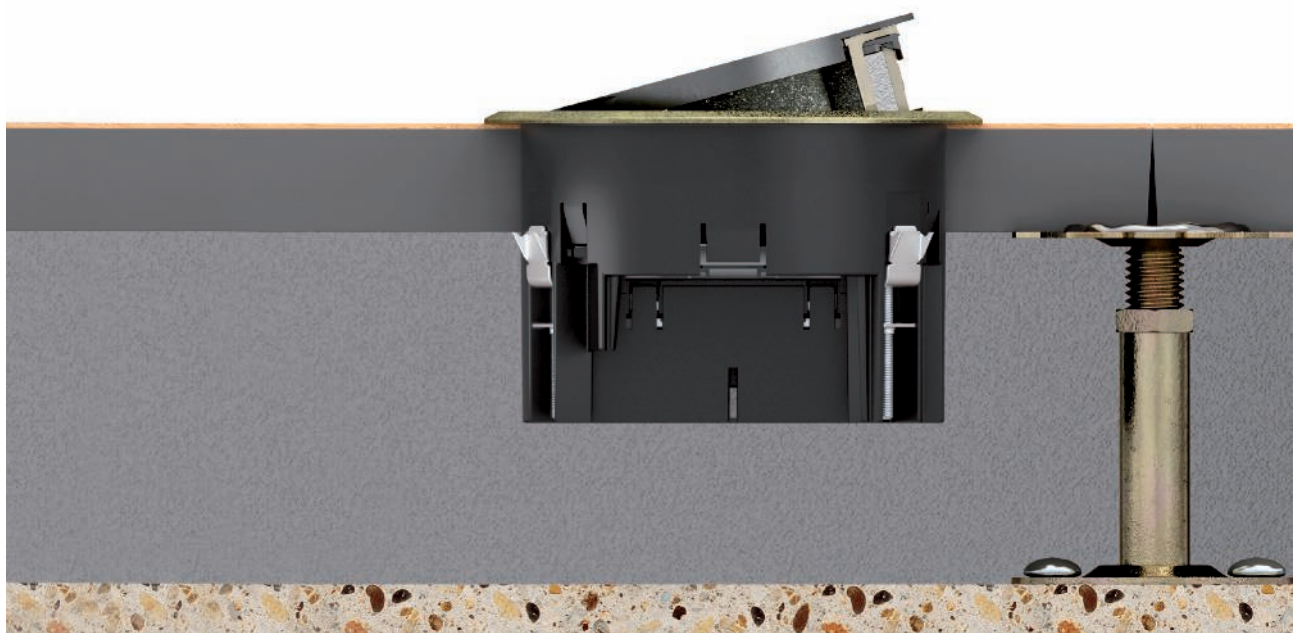
Variable

All the cover variants of the GES R2 floor socket can be inserted in raised floors or in the screed.



Installation in raised floors

The installation socket is mounted in the raised floor plate using three fastening brackets.



GES R2 floor socket made of die-cast zinc

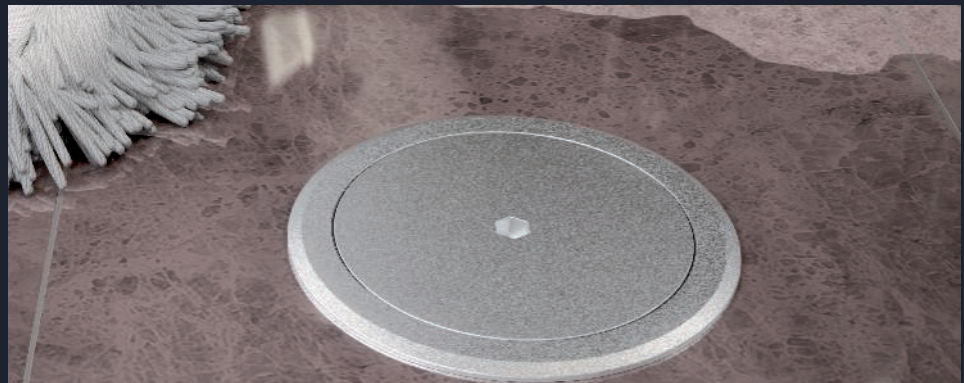
For wet-cleaned floors

The tube body can be operated with one hand. To open it, the handle clamp is pulled up and, after the audible engaging of the support, turned slightly left and locked.

To insert the cables, it is sufficient to press two pressure points to release the cover. After the connectors have been inserted, the cover is audibly engaged on the tube body ring. The tube body cover is closed again by pressing two opposing pressure points and half lowering the cover. Then turn the tube body slightly to the right to make it flush with the floor.



The tube body seals the closed installation space against the ingress of water, which occurs, for example, when the floor is cleaned. Even if the tube body cover is open for letting out cables, a seal in the lower ring of the installation socket offers protection against the ingress of water. The GES R2 floor socket with tube body thus fulfils the requirements for service outlets in wet-care floors according to EN 50085-2-2 and is certified to IP66 in the unused state.



Blank version with metal cover

The metal cover with bayonet lock can be opened with an Allen key. This version is particularly suitable for public areas and for the supply of temporary installations.



Surfaces

The GES R2 floor socket with tube body stands out through its compact shape and discreet design. Six high-quality surfaces are available: old copper, old brass, chromium, nickel, nickel-oxidised and deep black.

GESR2 2020 / en / 2021/12/07 12:01:38 (LL Export: 01981) / 2021/12/07 12:02:00 12:02:00

GES R2 floor socket made of die-cast zinc

For wet-care floors

The GES R2 floor socket with hinged cover stands out through its fine design. It is the perfect solution for high-quality floor coverings, which are dry or wet-cleaned.



Hinged cover

The locking function of the hinged cover allows a secure outlet for the cable routing. When closed, the floor socket is even suitable for wet care.



Surfaces

The version with hinged cover is available in the colours old copper, old brass, chrome, nickel, nickel-oxidised and deep black.

IP
66



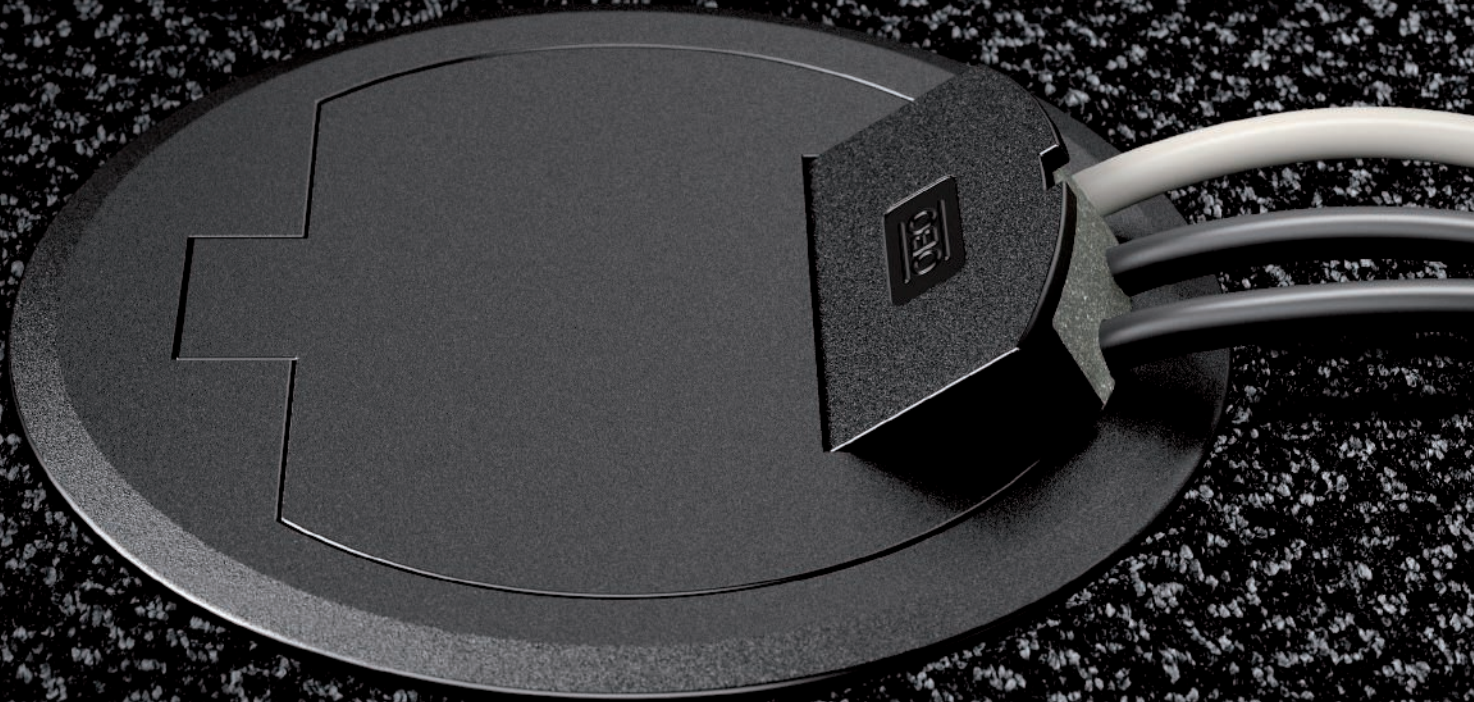
ESR2 20X Ven 20X (12/17/12) 1:33:14:01 (1:44:30:02) 1:02 12/07 12/02 00/12/14/00

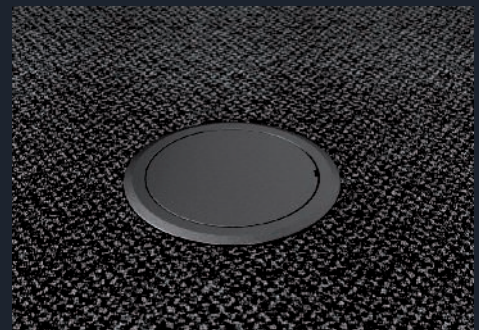


Plastic GES R2 floor socket

For dry-cleaned floors

The plastic GES R2 variants are particularly suitable for construction projects which use carpet as the floor covering. Typical areas of application are office and administrative buildings.





Cover versions

Two cover variants are available: The cover variant with cord outlet provides a permanent cable outlet to supply the electrical resources. The version with blanking cover, which can only be opened with a screwdriver, protects against unintentional third-party access.

Protective frame

The floor covering protection frame protects the carpet against damage and prevents wear at the cut edges of the carpet.



Colours

The plastic floor sockets are available in the colours iron grey or graphite black.

Installation socket for Modul 45®

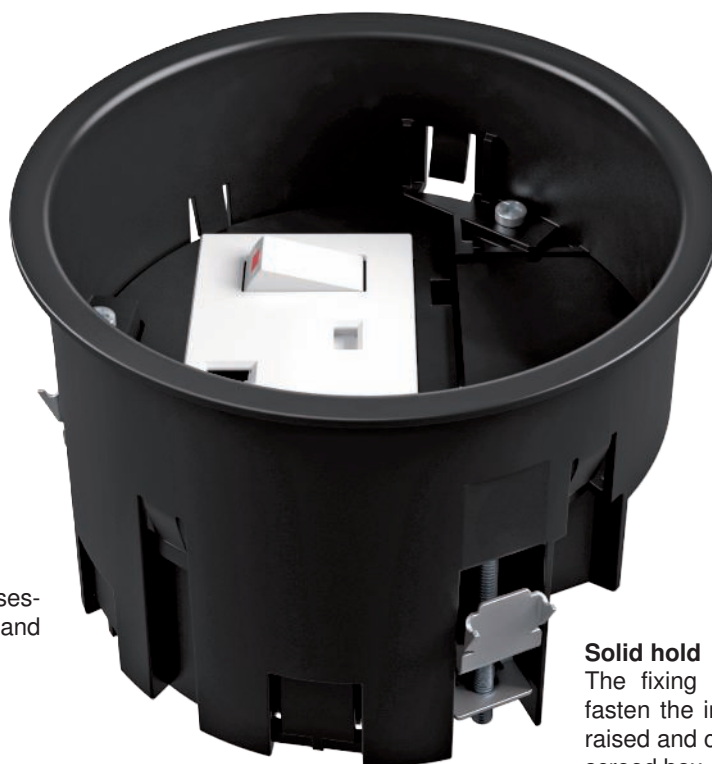
The installation socket for GES R2 service outlets accepts Modul 45® devices. After the routing of the electrical installation, the installation socket is inserted in the screed box.

Separation of different current types

The installation socket offers separate installation spaces for heavy current connections and data or multimedia connections.

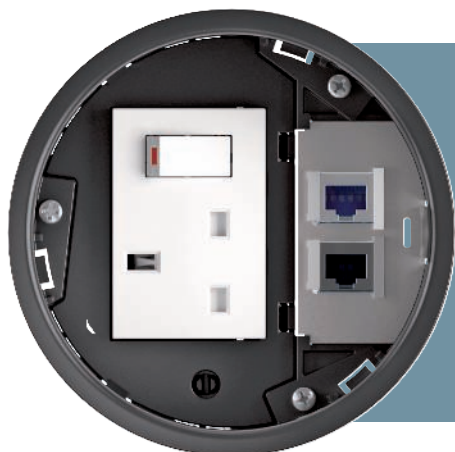
Functional

The installation socket possesses break-out cable entries and integrated strain relief.



Solid hold

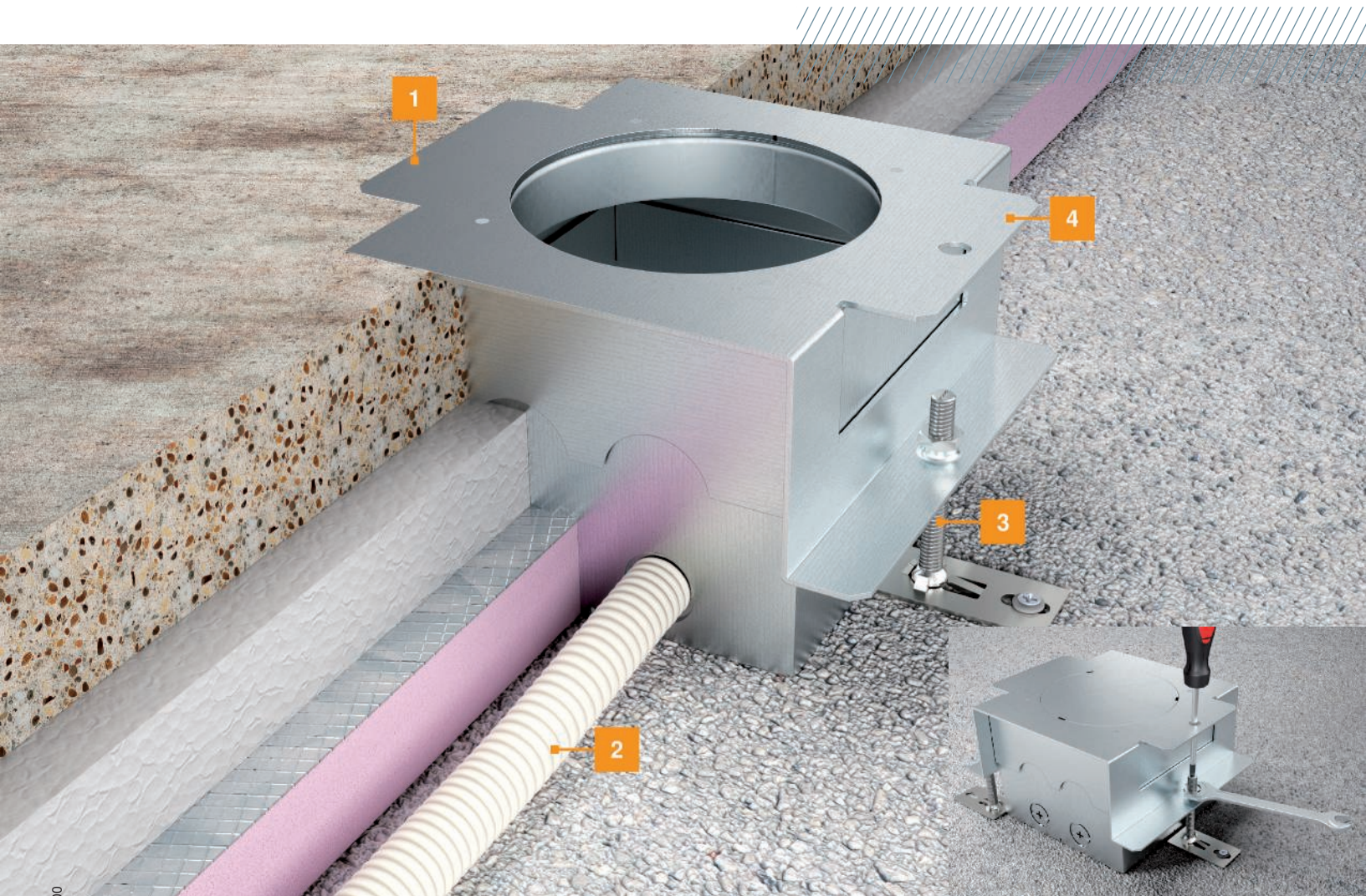
The fixing bracket is used to fasten the installation socket in raised and cavity floors or in the screed box.



Varied installation options

The installation socket MT R2 1.5, in which a single switched socket can be installed, is suitable for standard applications. The variant for two single Modul 45® devices offers a great amount of installation flexibility. The installation space is separated here. This allows simultaneous installation of sockets, data and multi-media connections, such as HDMI or VGA.

Mounting of the underfloor box in the screed



1 Installation in the screed box

The GES R2 floor sockets are installed in the screed in the compact screed box. The screed box possesses a sturdy pressure acceptance plate, whose frame serves as the screed drip edge. The mounting protection cover of the screed box is knocked out after the screed work has been completed. This makes the installation opening for the service outlet accessible.

2 Connection

Cables are routed via flexible installation pipes in the insulation layer of the screed construction. The screed box possesses four break-out pipe insertions, either for M20 or M25 pipes.

3 Height adjustment

Using a simple 3-point height adjustment, the screed box can be adjusted exactly to the top edge of the screed. The height adjustment ranges from 85 to 130 mm.

4 Screed-flush drip edge

The outlet edge of the screed box ensures sufficient stability and load dissipation in the area. The installation socket and the service outlet are installed after the floor covering work has been carried out.



GES R2 floor sockets



Hinged cover, metal

16



Tube body cover

18



Blanking cover, metal

20



Plastic hinged cover and blanking cover

22



Screed box and installation socket

23



Mounting plates for installation sockets

24



Accessories

25

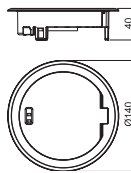


Service outlet with hinged cover and locking slider for GES R2 floor socket for direct installation in the MT R2 installation socket. When closed, the floor socket fulfils the requirements of EN 50085-2-2 for wet-cleaned floors.

Metal hinged cover for GES R2 floor socket

Service outlet with hinged cover and locking slider, GES R2, nickel

Zn N



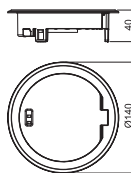
Type	Pack Piece	Weight kg/100 pc.	Item no.
GES R2 Ni	1	58.500	7408850

/pc.

Service outlet with hinged cover and locking slider for GES R2 floor socket for direct installation in the MT R2 installation socket.
When closed, the floor socket can be wet-cleaned.

Service outlet with hinged cover and locking slider, GES R2, old brass

Zn CuZn 37



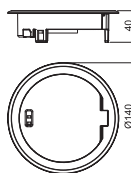
Type	Pack Piece	Weight kg/100 pc.	Item no.
GES R2 CuZn	1	58.500	7408852

/pc.

Service outlet with hinged cover and locking slider for GES R2 floor socket for direct installation in the MT R2 installation socket.
When closed, the floor socket can be wet-cleaned.

Service outlet with hinged cover and locking slider, GES R2, old copper

Zn Cu



Type	Pack Piece	Weight kg/100 pc.	Item no.
GES R2 Cu	1	58.500	7408854

/pc.

Service outlet with hinged cover and locking slider for GES R2 floor socket for direct installation in the MT R2 installation socket.
When closed, the floor socket can be wet-cleaned.

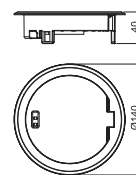
Zn

Service outlet with hinged cover and locking slider, GES R2, chrome

Type	Pack Piece	Weight kg/100 pc.	Item no.
GES R2 Cr	1	58.500	7408856

/pc.

Service outlet with hinged cover and locking slider for GES R2 floor socket for direct installation in the MT R2 installation socket.
When closed, the floor socket can be wet-cleaned.

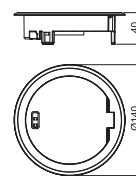


Zn P

Service outlet with hinged cover and locking slider, GES R2, deep black

Type	Pack Piece	Weight kg/100 pc.	Item no.
GES R2 KP	1	58.500	7408847

Service outlet with hinged cover and locking slider for GES R2 floor socket for direct installation in the MT R2 installation socket.
When closed, the floor socket can be wet-cleaned.

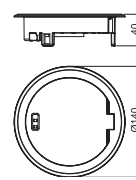


Zn

Service outlet with hinged cover and locking slider, GES R2, nickel-oxidised

Type	Pack Piece	Weight kg/100 pc.	Item no.
GES R2 Ni-O	1	58.500	7408849

Service outlet with hinged cover and locking slider for GES R2 floor socket for direct installation in the MT R2 installation socket.
When closed, the floor socket can be wet-cleaned.



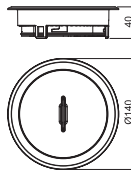


Service outlet with tube body and handle clamp for GES R2 floor socket for direct installation in the MT R2 installation socket. The tube body fulfils the requirements of EN 50085-2-2 for wet-cleaned floors, also when in use.

Tube body for floor socket GES R2

Service outlet with tube body with handle clamp, GES R2, nickel

Zn N



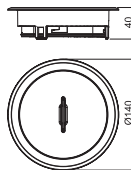
Type	Pack Piece	Weight kg/100 pc.	Item no.
GES R2T Ni	1	114.100	7408860

/pc.

Service outlet with tube body and handle clamp for GES R2 floor socket for direct installation in the MT R2 installation socket for indoor use.
The tube body fulfils the requirements of EN 50085-2-2 for wet-cleaned floors, also when in use.

Service outlet with tube body with handle clamp, GES R2, old brass

Zn CuZn 37



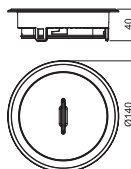
Type	Pack Piece	Weight kg/100 pc.	Item no.
GES R2T CuZn	1	114.100	7408862

/pc.

Service outlet with tube body and handle clamp for GES R2 floor socket for direct installation in the MT R2 installation socket for indoor use.
The tube body fulfils the requirements of EN 50085-2-2 for wet-cleaned floors, also when in use.

Service outlet with tube body with handle clamp, GES R2, old copper

Zn Cu



Type	Pack Piece	Weight kg/100 pc.	Item no.
GES R2T Cu	1	114.100	7408864

/pc.

Service outlet with tube body and handle clamp for GES R2 floor socket for direct installation in the MT R2 installation socket for indoor use.
The tube body fulfils the requirements of EN 50085-2-2 for wet-cleaned floors, also when in use.

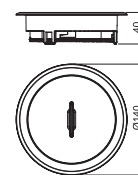
Zn

Service outlet with tube body with handle clamp, GES R2, chrome

Type	Pack Piece	Weight kg/100 pc.	Item no.
GES R2T Cr	1	114.100	7408866

/pc.

Service outlet with tube body and handle clamp for GES R2 floor socket for direct installation in the MT R2 installation socket for indoor use.
The tube body fulfils the requirements of EN 50085-2-2 for wet-cleaned floors, also when in use.

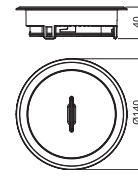


Zn P

Service outlet with tube body and handle clamp, GES R2, deep black

Type	Pack Piece	Weight kg/100 pc.	Item no.
GES R2T KP	1	107.000	7408857

Service outlet with tube body and handle clamp for GES R2 floor socket for direct installation in the MT R2 installation socket for indoor use.
The tube body fulfils the requirements of EN 50085-2-2 for wet-cleaned floors, also when in use.

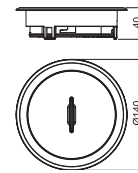


Zn

Service outlet with tube body and handle clamp, GES R2, nickel-oxidised

Type	Pack Piece	Weight kg/100 pc.	Item no.
GES R2T Ni-O	1	107.000	7408859

Service outlet with tube body and handle clamp for GES R2 floor socket for direct installation in the MT R2 installation socket for indoor use.
The tube body fulfils the requirements of EN 50085-2-2 for wet-cleaned floors, also when in use.



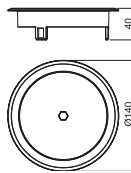
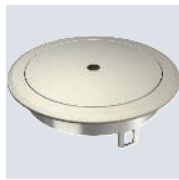


Service outlet with blanking cover and Allen screw with locking slider for GES R2 floor socket for direct installation in the MT R2 installation socket. The cover version can be used as a cable outlet. When closed, the floor socket fulfils the requirements of EN 50085-2-2 for wet-cleaned floors.

Blanking cover for floor socket GES R2

Service outlet with blanking cover and Allen slot, GES R2, nickel

Zn N



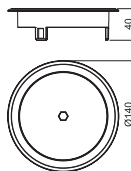
Type	Pack Piece	Weight kg/100 pc.	Item no.
GES R2B Ni	1	58.200	7408870

/pc.

Service outlet with blanking cover and Allen slot for GES R2 floor socket for direct installation in the MT R2 installation socket in indoor areas.
The cover version can be used as a cable outlet.
When closed, the floor socket can be wet-cleaned.

Service outlet with blanking cover and Allen slot, GES R2, old brass

Zn CuZn 37



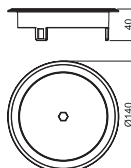
Type	Pack Piece	Weight kg/100 pc.	Item no.
GES R2B CuZn	1	58.200	7408872

/pc.

Service outlet with blanking cover and Allen slot for GES R2 floor socket for direct installation in the MT R2 installation socket in indoor areas.
The cover version can be used as a cable outlet.
When closed, the floor socket can be wet-cleaned.

Service outlet with blanking cover and Allen slot, GES R2, old copper

Zn Cu



Type	Pack Piece	Weight kg/100 pc.	Item no.
GES R2B Cu	1	58.200	7408874

/pc.

Service outlet with blanking cover and Allen slot for GES R2 floor socket for direct installation in the MT R2 installation socket in indoor areas.
The cover version can be used as a cable outlet.
When closed, the floor socket can be wet-cleaned.

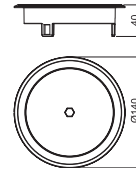
Zn

Service outlet with blanking cover and Allen slot, GES R2, chrome

Type	Pack Piece	Weight kg/100 pc.	Item no.
GES R2B Cr	1	58.200	7408876

/pc.

Service outlet with blanking cover and Allen slot for GES R2 floor socket for direct installation in the MT R2 installation socket in indoor areas.
The cover version can be used as a cable outlet.
When closed, the floor socket can be wet-cleaned.

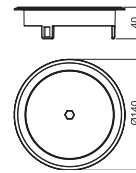


Zn

Service outlet with blanking cover and Allen slot, GES R2, nickel-oxidised

Type	Pack Piece	Weight kg/100 pc.	Item no.
GES R2B Ni-O	1	58.200	7408869

Service outlet with blanking cover and Allen slot for GES R2 floor socket for direct installation in the MT R2 installation socket in indoor areas.
The cover version can be used as a cable outlet.
When closed, the floor socket can be wet-cleaned.



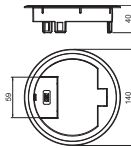


Service outlet with hinged cover and cord outlet for GES R2 floor socket for direct installation in the MT R2 installation socket. For use in dry-cleaned floors.

Plastic cover for floor socket GES R2

Service outlet with hinged cover and cord outlet, GES R2

PA



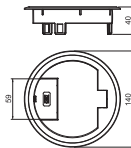
Type	Colour	Pack	Weight	Item no.
		Piece	kg/100 pc.	
GES R2 7011	Iron grey	1	8.800	7405082

/pc.

Service outlet with hinged cover and cord outlet for GES R2 floor socket for direct installation in the MT R2 installation socket.
For use in dry-cleaned floors for indoor use.

Service outlet with hinged cover and cord outlet, GES R2

PA



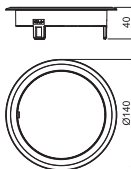
Type	Colour	Pack	Weight	Item no.
		Piece	kg/100 pc.	
GES R2 9011	Graphite black	1	8.800	7405084

/pc.

Service outlet with hinged cover and cord outlet for GES R2 floor socket for direct installation in the MT R2 installation socket.
For use in dry-cleaned floors for indoor use.

Service outlet with blanking cover and opening contour, GES R2

PA



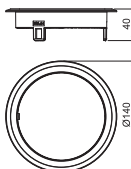
Type	Colour	Pack	Weight	Item no.
		Piece	kg/100 pc.	
GES R2B 7011	Iron grey	1	8.150	7405086

/pc.

Service outlet with blanking cover and cord outlet for GES R2 floor socket for direct installation in the MT R2 installation socket.
For use in dry-cleaned floors for indoor use.

Service outlet with blanking cover and opening contour, GES R2

PA



Type	Colour	Pack	Weight	Item no.
		Piece	kg/100 pc.	
GES R2B 9011	Graphite black	1	8.150	7405088

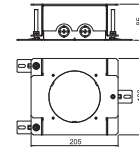
/pc.

Service outlet with blanking cover and cord outlet for GES R2 floor socket for direct installation in the MT R2 installation socket.
For use in dry-cleaned floors for indoor use.

St FS

Screed box for GES R2

Type	Screed height		Installation diameter	Pack Piece	Weight kg/100 pc.	Item no.
	mm					
UD GES R2	85-130	122		1	218.000	7428526



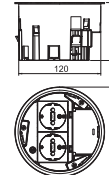
Height-adjustable screed box for the installation of the installation socket of the GES R2 floor socket. With 2x2 insertion openings for installation pipes (M20/M25).

/pc.

PA

Installation socket, double, VDE

Type	Installation depth		Installation diameter	Pack Piece	Weight kg/100 pc.	Item no.
	mm					
MT R2 VDE	85	122		1	26.800	7408832



Installation socket for GES R2 floor socket for mounting in UD GES R2 screed box and in raised floor plates with an installation opening diameter of 122 mm.

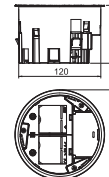
The scope of delivery contains a double protective contact socket (VDE). Up to two modular data sockets (Keystones) can be installed with optional mounting plate.

/pc.

PA

Installation socket, 1+1 empty

Type	Installation depth		Installation diameter	Pack Piece	Weight kg/100 pc.	Item no.
	mm					
MT R2 1-1	85	122		1	19.800	7408838



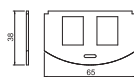
Installation socket for GES R2 floor socket for mounting in UD GES R2 screed box and in raised floor plates with an installation opening diameter of 122 mm.

The scope of supply contains a partition and two cover plates for the installation of individual Modul 45 devices. Up to two modular data sockets (Keystones) can be installed with optional mounting plate.

/pc.

VA

Mounting plate for data technology, type A



Type

MP R2 2A

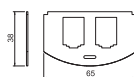
Pack Piece	Weight kg/100 pc.	Item no.
1	1.960	7408802

/pc.

Mounting plate to accept two data connection modules of the following types: AMP TYCO: Standard 110Connect, SL Series 110Connect and Toolless, AMP-Twist; Brand-Rex: unshielded; GG45; TKM RJ MOD; Nexans: LAN-mark with Adapter-Clip; Siemon CAT6; 3M K6 and K10.
Dimensions of a mounting opening in mm: 20.10 x 14.80.

VA

Mounting plate for data technology, type B



Type

MP R2 2B

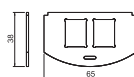
Pack Piece	Weight kg/100 pc.	Item no.
1	1.940	7408804

/pc.

Mounting plate to accept two connection modules for data connection modules of the following types BTR: E-DAT; Dätwyler: MS and MS-N; Kerpen: VarioKeystone.
Dimensions of a mounting opening in mm: 19.35/21.55 x 14.85.

VA

Mounting plate for data technology, type C



Type

MP R2 2C

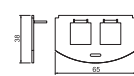
Pack Piece	Weight kg/100 pc.	Item no.
1	1.950	7408806

/pc.

Mounting plate to accept two data connection modules of the following types: Brand-Rex: shielded; EKU: E-Stone; Dätwyler: KS-T, MS-K and KU-T module; R&M: Snap-In and Keystone; Rutenbeck: UM and UMflex; SETEC: MKJ, UKJ and XKJ; Siemon TERA; Telegärtner: AMJ and UMJ.
Dimensions of a mounting opening in mm: 19.30 x 14.80.

VA

Mounting plate for data technology, type F



Type

MP R2 2F

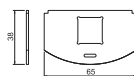
Pack Piece	Weight kg/100 pc.	Item no.
1	2.190	7408808

/pc.

Mounting plate to accept two data connection modules, type Avaya/Systimax: M series.
Dimensions of a mounting opening in mm: 17.40 x 16.60.

VA

Mounting plate for data technology, type LE



Type

MP R2 LE

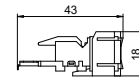
Pack Piece	Weight kg/100 pc.	Item no.
1	2.250	7408810

/pc.

Mounting support to accept two data connection modules of the following types: LexCom 125 and 250.
Dimensions of a mounting opening in mm: 18.30 x 17.20.

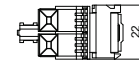
Connection module Cat. 5, unshielded, snap-in

Type	Pack Piece	Weight kg/100 pc.	Item no.
ASM-C5 S	1	1.120	6117347



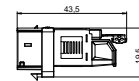
/pc.

Connection module Cat. 5e unshielded, with a RJ45 slot. Including a dust cover, a cable tie, a snap-in fastening frame and mounting instructions. Suitable for installation in support plates, type MTM 2C and MTM 3C, mounting plate type MPR2 2C, mounting support type MTGE2 2C, MTGE2 15 2C and MTGE2 F 2C.



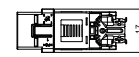
Connection module Cat. 6A, unshielded, snap-in

Type	Pack Piece	Weight kg/100 pc.	Item no.
ASM-C6A	1	1.050	6117348



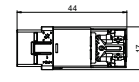
/pc.

Connection module Cat. 6A (ISO) unshielded, with an RJ45 slot. Including a dust cover, a cable tie, a Keystone fastening frame and mounting instructions. Suitable for installation in the data technology supports of type DTG-2C and DTS-2C, support plate of type MTM 2C and MTM 3C, mounting plate of type MPR2 2C, mounting supports of type MTGE2 2C, MTGE2 15 2C and MTGE2 F 2C.



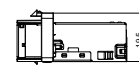
Connection module Cat. 6A, shielded, snap-in

Type	Pack Piece	Weight kg/100 pc.	Item no.
ASM-C6A G	1	1.630	6117346



/pc.

Connection module Cat. 6A (ISO) shielded, with an RJ45 slot. Including an EMC screen hood, a dust cover, a cable tie, a Keystone fastening frame and mounting instructions. Suitable for installation in the data technology supports of type DTG-2C and DTS-2C, support plate of type MTM 2C and MTM 3C, mounting plate of type MPR2 2C, mounting supports of type MTGE2 2C, MTGE2 15 2C and MTGE2 F 2C.



OBO Bettermann Middle East and North Africa FZCO

P.O. Box 371148
Office 402 - Building 1E
Dubai Airport Free Zone
Dubai

Customer Service

Phone: +971 4 266 8726 Fax: +971 4 266 8726
E-mail: salesmea@obo.de

www.obo-bettermann.com

Building Connections

