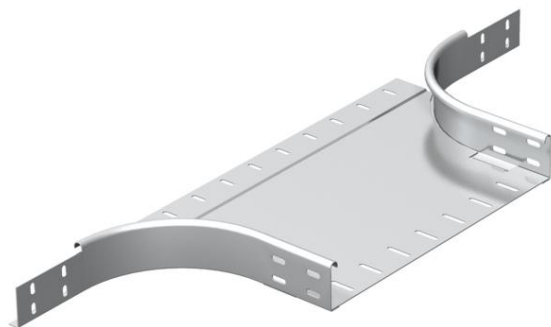


# Technical data sheet

Add-on tee 400-600

Item number: 7136250



Add-on tee, unperforated, for horizontal and vertical use.  
Fitting in round design. The interior radius of the fitting is 150 mm. Fastening materials should be ordered separately.



**A2** .304 Stainless Steel

**2B** Bright, reworked

## Master data

Type	RAA 650 A2
Manufacturer	OBO
Material	.304 Stainless Steel
Surface	Bright, reworked
Surface standard	
Smallest sales unit	1
Unit of quantity	Units
Weight	255 kg
Weight unit	kg/100 pairs

## Dimensions

Width	500 mm
Width	20 in
Height	60 mm
Height	2 in
Plate thickness	1.5 mm
Dimension B	500 mm
Dimension R	150 mm

## Features/properties/dimensions

Bend (angle)	90°
Connector version	Without connectors
Maintain electrical functions	no
Material thickness, floor plate	1.5 mm
NATO hole pattern	no
Change of direction	Horizontal
Rustproof steel, pickled	no
Wide-span version	no