

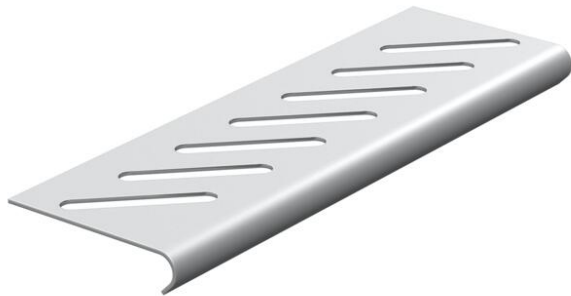
Technical data sheet

Bottom end plate



Item number: 7084143

Chalfant Item Nb.



For base reinforcement at the ends of the tray and as cable protection.
For fastening, please order screws, type FRSB M6x12, separately.



A4 Stainless steel, grade 316 Ti

2B Bright, reworked

Master data

Type	BEB 200 A4
Manufacturer	OBO
Colour	Stainless steel
Material	Stainless steel, grade 316 Ti
Surface	Bright, reworked
Surface standard	
Smallest sales unit	1
Unit of quantity	Units
Weight	9.367 kg
Weight unit	kg/100 pairs

Dimensions

Width	200 mm
Height	35 mm
Dimension B	200 mm

Features/properties/dimensions

Maintain electrical functions	no
Rustproof steel, pickled	no
Wide-span version	no