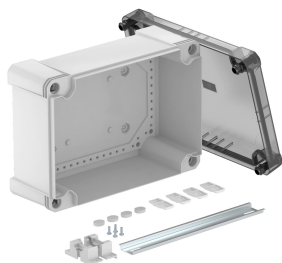


Technical data sheet

Empty housing X 25 with hat profile rail

Item number: 2005572



Junction box with hat profile rail for the connection of cables and lines indoors and in outdoor areas. Rectangular design without entries. Suitable for wall and ceiling mounting with the option to fasten outside, inside or to mount via the corner domes. Particularly impact resistant with IK08. Transparent cover with quick lock, sealable. Made from halogen-free and UV-resistant materials.

With hat profile rail, type 2069, and fastening set.

Junction box according to DIN EN 60670. Impact resistance IK08 according to DIN EN 50102. Protection rating IP67 according to DIN EN 60529.



PC

Polycarbonate

Master data		
Item number	2005572	
Description 1	Empty Enclosure	
Description 2	with trans. lid, rail 2069	
Manufacturer	OBO	
Dimension	286x202x125	
Colour	Grey / transparent	
Material	Polycarbonate	
Smallest sales unit	1	
Unit of quantity	Piece	
Weight	107 kg	
Weight unit	kg/100 pc.	
CO Footprint (GWP) Cradle-to-Gate	3,9966 kg COe / 1 Piece	

Technical data sheet

Empty housing X 25 with hat profile rail

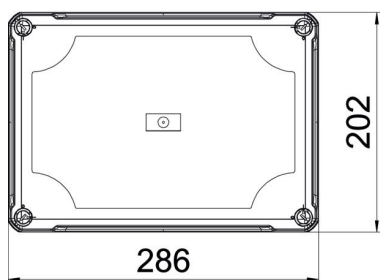
Item number: 2005572



Dimensions



Length	286 mm
Width	202 mm
Height	126 mm



Technical data

Extension option	no
Cover fastening	Screwed
Shape	Rectangular
Suitable for outdoor use	yes
Clear internal dimensions	271x187x110 mm
with lid	yes
Mounting type	Surface-mounted
Protection rating	IP67
Protection rating IK code	IK09
Protection class	II
Permitted temperature range, max.	60 °C
Permitted temperature range, min.	-5 °C
Transparent lid	yes
Weatherproof	yes