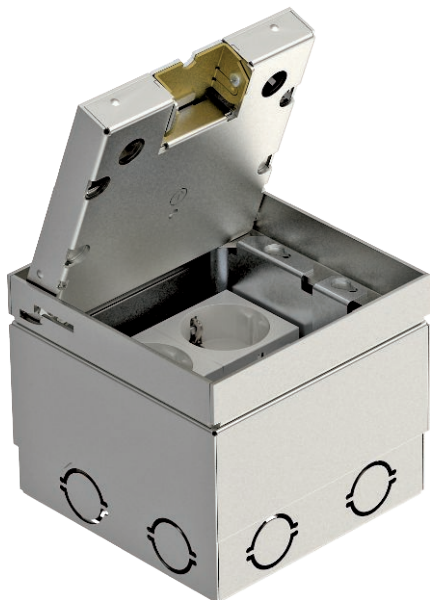


Technical data sheet

UDHOME2 floor socket, with floor covering recess in stainless steel lid, equipped
Item no. 7368399



Square floor socket with floor covering recess for use in dry-care cavity and screed floors in indoor areas. Installation housing with pre-marked insertion openings for pipes (M25). Cover adjustable to top edge of floor covering using four height-adjustment supports. The minimum installation depth is 110 mm, the height-adjustment range + 20 mm.

Surfaces made of stainless steel and visible in the floor covering. The load-bearing capacity of 15 kN is only guaranteed when in an unused state.

The scope of delivery contains a double protective contact socket. Up to two modular data sockets (Keystones) can be installed with optional mounting supports.

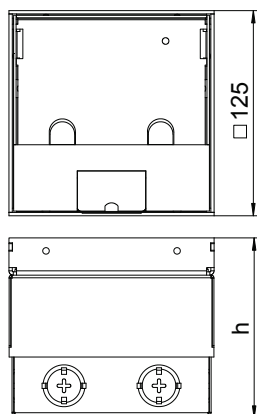


VA Stainless steel, rustproof 1.4303

Master data

Item no.	7368399
Type	UDHOME2 V V
Description 1	Floor socket, complete
Description 2	double VDE socket
Dimension	125x125x110
Material	Stainless steel, grade 305
Material symbol	A2
Smallest sales unit (VG)	1 Piece
Weight	210,00 kg/100 pc.

Technical data



Dimension h	110,00 mm
Wide external dimensions	125,00 mm
Wide installation dimensions	125,00 mm
Length of external dimensions	125,00 mm
Length of installation dimensions	125,00 mm
Cable outlet version	Swivellable cord outlet
Floor covering thickness	15,00 mm
Floor covering protection frame	<input type="checkbox"/>
Floor care	Dry
Version for	Square
Installation depth	110,00 mm
Floor height	110-130 mm
Suitable for wet care	<input type="checkbox"/>
Suitable for raised floor installation	<input type="checkbox"/>
Suitable for cavity floor installation	<input checked="" type="checkbox"/>
Suitable for underfloor ducts	<input checked="" type="checkbox"/>
With floor covering recess	<input checked="" type="checkbox"/>
Height-adjustment range	110,00 - 130,00 mm
Opening mechanism	Tool