

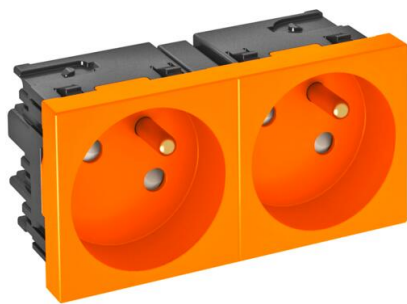
# Technical data sheet

33° socket, Connect 45, with earthing pin, double, pure orange  
Item number: 6120674



Socket with earthing pin and side connection, Double 33°, with increased touch protection, with screwless terminals, 2-pin, 16 A, 250 V~, with connection terminals to IEC 60884-1.

For installation in Rapid 45 trunking, device installation trunking, service poles, underfloor systems and desk boxes.



PC Polycarbonate

Master data		
Item number	6120674	
Description 1	Socket 33°, double	
Description 2	with earth pin, Connect 45	
Manufacturer	OBO	
Dimension	250V, 10/16A	
Colour	Pure orange; RAL 2004	
Material	Polycarbonate	
Smallest sales unit	1	
Unit of quantity	Piece	
Weight	8.5 kg	
Weight unit	kg/100 pc.	
CO Footprint (GWP) Cradle-to-Gate	0,1589 kg COe / 1 Piece	

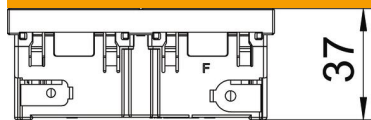
# Technical data sheet

33° socket, Connect 45, with earthing pin, double, pure orange

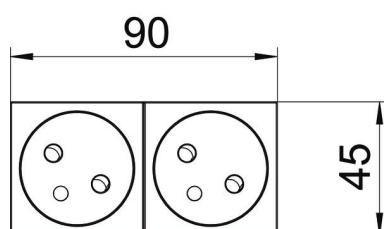
Item number: 6120674



## Dimensions



Width	90 mm
Height	45 mm



## Technical data

Cover	Central plate
Closable	no
Connection type	Screwless terminal
Number of units	2
Number of modules (for modular construction)	2
Number of switchable sockets	0
Number of poles	2
Printed label/coding	Without printing
Version for	Double 33°
Surface version	Matt
Version for	Protective contact pin
Ejection mechanism	no
Fastening type	Lock
Labelling panel	no
Operating temperature, max.	40 °C
Operating temperature, min.	-5 °C
increased touch protection	yes
Error current protection	no
For more difficult conditions (according to VDE)	no
Halogen-free	yes
Insulated installation	no
Hinged cover	no
Coding	no
Warning light	no
With on/off switch	no
With fine-wire fuse	no
With functional lighting	no
With orientation lighting	no
Mounting type	Device installation duct
Nominal voltage	250 V

# Technical data sheet

33° socket, Connect 45, with earthing pin, double, pure orange

Item number: 6120674



## Technical data

Nominal current	16 A
Protection rating	Other
Special power supply	Without special power supply
Socket version	NF
Socket angle	33°
Depth	37 mm
Transparent	no
Rotated central insert	yes
Approvals	VDE
Surge protection	no