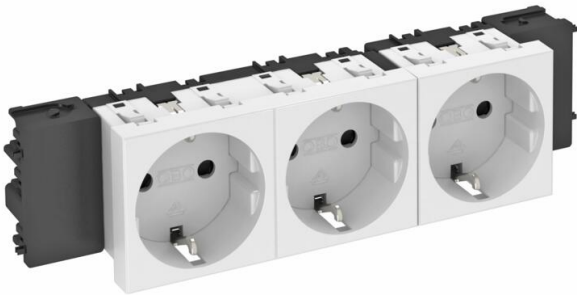


Technical data sheet

Socket 0°, Connect 45, protective contact, triple

Item number: 6120382



Protective contact socket with connection to side, triple 0°, with increased touch protection, with screwless terminals, 2-pin, 16 A, 250 V~, with connection terminals to IEC 60884-1, suitable for the installation in Rapid 45 device installation trunking systems.
For installation in Rapid 45 trunking, device installation trunking, service poles, underfloor systems and desk boxes.



PC Polycarbonate

Master data		
Item number	6120382	
Description 1	Socket 0°, triple	
Description 2	protective contact, Connect 45	
Manufacturer	OBO	
Dimension	250V, 10/16A	
Colour	Pure white; RAL 9010	
Material	Polycarbonate	
Smallest sales unit	1	
Unit of quantity	Piece	
Weight	16.5 kg	
Weight unit	kg/100 pc.	
CO Footprint (GWP) Cradle-to-Gate	0,6942 kg COe / 1 Piece	

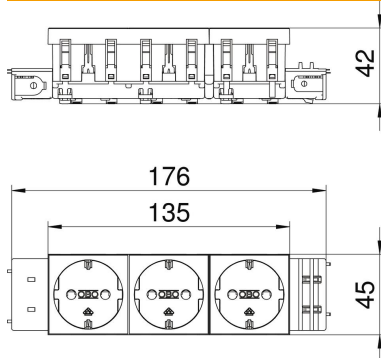
Technical data sheet

Socket 0°, Connect 45, protective contact, triple

Item number: 6120382



Dimensions



Width	176 mm
Height	45 mm

Technical data

Cover	Central plate
Closable	no
Connection type	Screwless terminal
Number of units	3
Number of modules (for modular construction)	0
Number of switchable sockets	0
Number of poles	2
Printed label/coding	Without printing
Version for	triple 0°
Surface version	Matt
Version for	SCHUKO
Ejection mechanism	no
Fastening type	Lock
Labelling panel	no
Operating temperature, max.	40 °C
Operating temperature, min.	-5 °C
increased touch protection	yes
Error current protection	no
For more difficult conditions (according to VDE)	no
Power reserve	no
Halogen-free	yes
Insulated installation	no
Hinged cover	no
Coding	no
Warning light	no
With on/off switch	no
With fine-wire fuse	no
With functional lighting	no
With orientation lighting	no
Mounting type	Device installation duct
Nominal voltage	250 V
Nominal current	16 A
Protection rating	Other
Special power supply	Without special power supply

Technical data sheet

Socket 0°, Connect 45, protective contact, triple

Item number: 6120382



Technical data

Socket version	Protective contact
Socket angle	0°
Depth	42 mm
Transparent	no
Rotated central insert	no
Surge protection	no