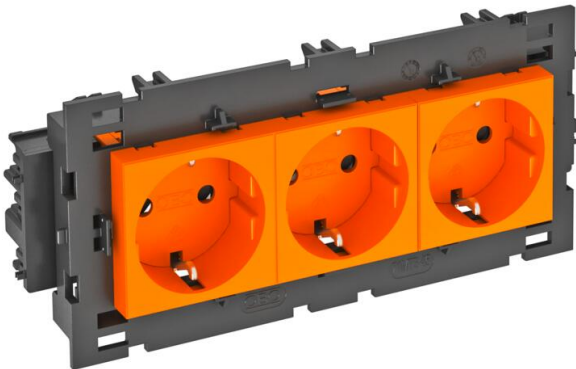


Technical data sheet

Socket 0°, Connect 80, protective contact, triple

Item number: 6120454



Protective contact socket with connection to side, triple 0°, with increased touch protection, with screwless terminals, 2-pin, 16 A, 250 V~, with connection terminals to IEC 60884-1, suitable for the installation in Rapid 80 device installation trunking systems.
For installation in Rapid 45 trunking, device installation trunking, service poles, underfloor systems and desk boxes.



PC Polycarbonate

| Master data | | |
|-----------------------------------|--------------------------------|--|
| Item number | 6120454 | |
| Description 1 | Socket 0°, triple | |
| Description 2 | protective contact, Connect 80 | |
| Manufacturer | OBO | |
| Dimension | 250V, 10/16A | |
| Colour | Pure orange; RAL 2004 | |
| Material | Polycarbonate | |
| Smallest sales unit | 1 | |
| Unit of quantity | Piece | |
| Weight | 20 kg | |
| Weight unit | kg/100 pc. | |
| CO Footprint (GWP) Cradle-to-Gate | 0,9428 kg COe / 1 Piece | |

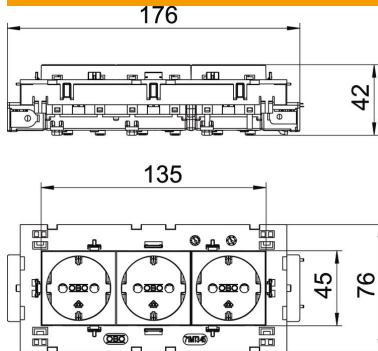
Technical data sheet

Socket 0°, Connect 80, protective contact, triple

Item number: 6120454



Dimensions



| | |
|--------|--------|
| Width | 176 mm |
| Height | 76 mm |

Technical data

| | |
|--|------------------------------|
| Cover | Central plate |
| Closable | no |
| Connection type | Screwless terminal |
| Number of units | 3 |
| Number of modules (for modular construction) | 0 |
| Number of switchable sockets | 0 |
| Number of poles | 2 |
| Printed label/coding | Without printing |
| Version for | triple 0° |
| Surface version | Matt |
| Version for | SCHUKO |
| Ejection mechanism | no |
| Fastening type | Lock |
| Labelling panel | no |
| Operating temperature, max. | 40 °C |
| Operating temperature, min. | -5 °C |
| increased touch protection | yes |
| Error current protection | no |
| For more difficult conditions (according to VDE) | no |
| Power reserve | no |
| Halogen-free | yes |
| Insulated installation | no |
| Hinged cover | no |
| Coding | no |
| Warning light | no |
| With on/off switch | no |
| With fine-wire fuse | no |
| With functional lighting | no |
| With orientation lighting | no |
| Mounting type | Device installation duct |
| Nominal voltage | 250 V |
| Nominal current | 16 A |
| Protection rating | Other |
| Special power supply | Without special power supply |
| Socket version | Protective contact |

Technical data sheet

Socket 0°, Connect 80, protective contact, triple

Item number: 6120454



Technical data

| | |
|------------------------|-------|
| Socket angle | 0° |
| Depth | 42 mm |
| Transparent | no |
| Rotated central insert | no |
| Surge protection | no |