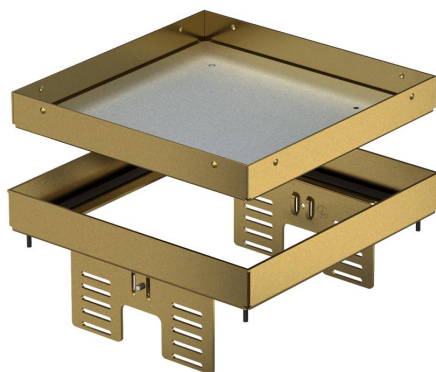


# Technical data sheet

Height-adjustable cassette for inspection opening,  
RKNUZD3, brass  
Item number: 7409054



Height-adjustable "blank" cassette, decoupled from the floor, for the creation of an inspection opening of nominal size 4 in dry or wet-cleaned floors for indoor use, for mounting in underfloor boxes UZD250-3 or UZD350-3, either in conjunction with a blanking lid DUG../4 or in UGD250-3/4 or UGD350-3/4. Mounting takes place using levelling profiles (order separately) in the aluminium frame profile of the underfloor boxes. Only suitable for smooth floor coverings. Height-adjustable cassette as a blind cassette, two-compartment. 2 APMT2 cover plates can be installed. For the installation of 2 UT3 universal supports for 4 individual installation devices with support ring/support clamp or 6 Modul 45 devices.



**CuZn**  
37 Brass

## Master data

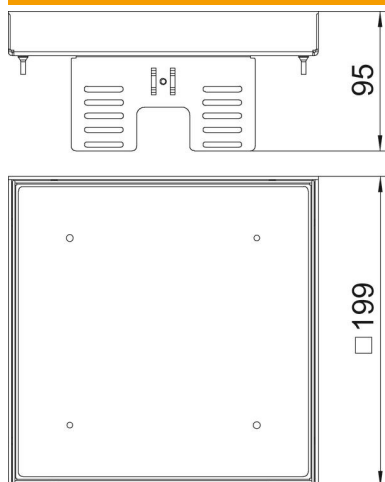
Item number	7409054
Type	RKN2 UZD3 4MS25
Description 1	Square cassette
Description 2	blank
Manufacturer	OBO
Dimension	200x200mm
Material	Brass
Smallest sales unit	1
Unit of quantity	Piece
Weight	232 kg
Weight unit	kg/100 pc.

# Technical data sheet

Height-adjustable cassette for inspection opening,  
RKNUZD3, brass  
Item number: 7409054



## Dimensions



Length	199 mm
Width	199 mm
Height	95 mm
Dimension h	95 mm

## Technical data

Number of installable devices	0
Number of cable outlets	0
Version for	Square
Cable outlet version	No cable outlet
Floor care	Wet
Decouplable	yes
Screed height, min.	105 mm
Floor height, min.	95 mm
Suitable for raised floor installation	yes
Suitable for cavity floor installation	yes
Suitable for underfloor box	250/350
Device support to accept mounting boxes	no
Length of installation dimensions	201 mm
Nominal size for device installation units	4
Protection rating (IP) when used	IP00
Protection rating (IP) when unused	IP44
Protection rating IK code	IK10
Heavy-duty version	no
Installation system type	UT3
Vertical load, large area	to 5,000 N
Vertical load, small area	to 3,000 N
Approvals	VDE