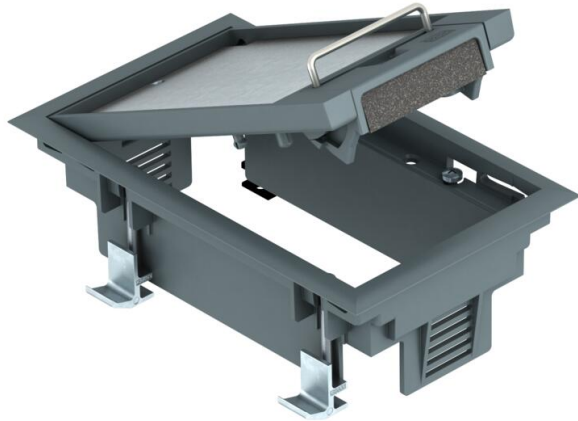


Technical data sheet

GES2DB service outlet with handle clamp

Item number: 7405100



Service outlet with handle clamp for up to 3 individual Modul 45 devices in one UT3 universal support, use in duct systems and system floors for indoor use. Up to two installation devices with 50 mm central plate can be inserted. Service outlet with handle clamp, 1-compartment, for the installation of MT2 mounting support.



PA Polyamide

Master data

| | |
|------------------------------------|---------------------------|
| Item number | 7405100 |
| Type | GES2 DB 7011 |
| Description 1 | Service outlet |
| Description 2 | for raised floor mounting |
| Manufacturer | OBO |
| Dimension | 192x118x91 |
| Colour | Iron grey; RAL 7011 |
| Material | Polyamide |
| Smallest sales unit | 1 |
| Unit of quantity | Piece |
| Weight | 66.4 kg |
| Weight unit | kg/100 pc. |
| CO2 Footprint (GWP) Cradle-to-Gate | 1,6639 kg CO2e / 1 Piece |

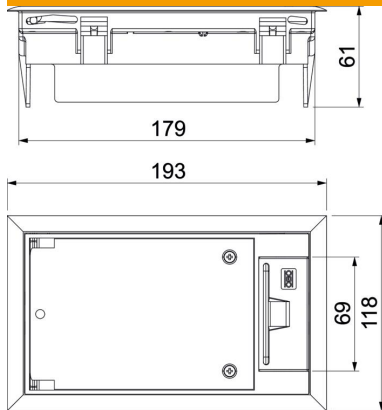
Technical data sheet

GES2DB service outlet with handle clamp

Item number: 7405100



Dimensions



Technical data

| | |
|---|-------------------------|
| Number of installable devices | 3 |
| Number of mounting boxes | 1 |
| Version for | Rectangular |
| Cable outlet version | Swivellable cord outlet |
| Floor covering protection frame | yes |
| Floor care | Dry |
| Seal installation option | no |
| Floor height, min. | 73 mm |
| Suitable for raised floor installation | yes |
| Suitable for screed-flush closed underfloor ducts | no |
| Suitable for screed-covered underfloor ducts | no |
| Suitable for cavity floor installation | yes |
| Suitable for wet care | no |
| Suitable for underfloor box | 250 |
| Suitable for underfloor ducts | no |
| Device support to accept mounting boxes | yes |
| Length of external dimensions | 194 mm |
| Length of installation dimensions | 180 mm |
| With floor covering recess | yes |
| Nominal size for device installation units | 2 |
| Frame version | Carpet protection frame |
| Protection rating (IP) when used | IP20 |
| Protection rating (IP) when unused | IP40 |
| Protection rating IK code | IK08 |
| Heavy-duty version | no |
| Clamping range D, max. | 57 mm |
| Clamping range D, min. | 20 mm |
| Installation system type | UT3 |
| Vertical load, large area | to 3,000 N |
| Vertical load, small area | to 3,000 N |

Technical data sheet

GES2DB service outlet with handle clamp

Item number: 7405100



Technical data

| | |
|--------------------------|--------|
| Approvals | VDE |
| Opening mechanism | Handle |
| Floor covering thickness | 5 mm |