

Technical data sheet

Clamp clip 2056 U-foot, 2-fold, plastic pressure sleeve, Al

Item number: 1186937



Clamp clip with U-foot, plastic pressure sleeve made of polypropylene. For vertical and horizontal mounting of 2 single cables on a C-profile rail. For slot width 18–22 mm. With 1-start screw thread on pressure sleeve, universal hexagonal screw head WAF10, with slot and cross recess. Suitable for assembly indoors and outdoors. Multiple cables should be separated by double sleeves. We recommend the use of a counter-sleeve.



Alu Aluminium

Master data

| | |
|------------------------------------|------------------------|
| Item number | 1186937 |
| Type | BS-U2-K-40 ALU |
| Description 1 | Clamp clip 2056 |
| Description 2 | double |
| Manufacturer | OBO |
| Dimension | 34-40mm |
| Material | Aluminium |
| Smallest sales unit | 50 |
| Unit of quantity | Piece |
| Weight | 3.545 kg |
| Weight unit | kg/100 pc. |
| CO2 Footprint (GWP) Cradle-to-Gate | 0,476 kg COe / 1 Piece |

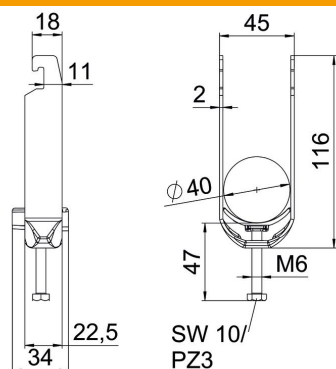
Technical data sheet

Clamp clip 2056 U-foot, 2-fold, plastic pressure sleeve, Al

Item number: 1186937



Dimensions



| | |
|------------------|---------|
| Length | 22.5 mm |
| Width | 45 mm |
| Height | 116 mm |
| Plate thickness | 2 mm |
| Dimension A | 22.5 mm |
| Dimension B | 45 mm |
| Dimension C | 34 mm |
| Dimension G (mm) | M6 |
| Dimension H | 116 mm |
| Dimension L | 47 mm |
| Dimension t | 2 mm |

Technical data

| | |
|--|---------------|
| Number of cables/pipes | 2 |
| For pipe diameter, max. | 40 mm |
| For pipe diameter, min. | 34 mm |
| for rail with slot width (with interval), max. | 22 mm |
| for rail with slot width (with interval), min. | 18 mm |
| Thread | M6 |
| Halogen-free | yes |
| Length of external dimensions | 34 mm |
| Max. Tightening torque | 3 Nm |
| With plastic trough | yes |
| With metal trough | no |
| Mounting type | Profile rail |
| Slot width | 10 mm |
| Clamping range D, max. | 40 mm |
| Clamping range D, min. | 34 mm |
| Surface addition | Untreated |
| Material addition | Aluminium |
| With counter-trough | no |
| Material of trough | Plastic |
| Material quality of trough | Polypropylene |