

# Technical data sheet

## Clamp clip 2056 U-foot, 1-fold, metal pressure sleeve, A4

Item number: 1186676



Clamp clip with U-foot, metal pressure sleeve with rounded edges to protect the cable. For vertical and horizontal mounting of 1 single cable on a C-profile rail. For slot width 18–22 mm. With 1-start screw thread on pressure sleeve, universal hexagonal screw head WAF10, with slot and cross recess. Suitable for assembly indoors and outdoors. We recommend the use of a counter-sleeve.



**A4** Stainless steel

**2B** Bright, treated

### Master data

|                                   |                         |
|-----------------------------------|-------------------------|
| Item number                       | 1186676                 |
| Type                              | BS-U1-M-76 A4           |
| Description 1                     | Clamp clip 2056         |
| Manufacturer                      | OBO                     |
| Dimension                         | 70-76mm                 |
| Material                          | Stainless steel         |
| Surface                           | Bright, treated         |
| Surface standard                  |                         |
| Smallest sales unit               | 25                      |
| Unit of quantity                  | Piece                   |
| Weight                            | 20.6 kg                 |
| Weight unit                       | kg/100 pc.              |
| CO Footprint (GWP) Cradle-to-Gate | 0,9765 kg COe / 1 Piece |

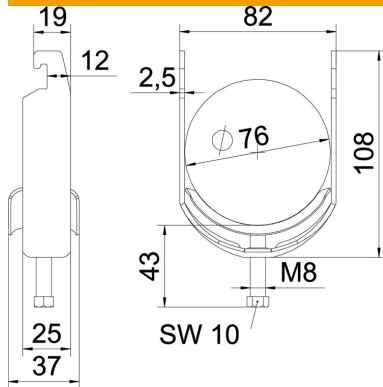
# Technical data sheet

Clamp clip 2056 U-foot, 1-fold, metal pressure sleeve, A4

Item number: 1186676



## Dimensions



|                  |        |
|------------------|--------|
| Length           | 25 mm  |
| Width            | 82 mm  |
| Height           | 108 mm |
| Plate thickness  | 2.5 mm |
| Dimension A      | 25 mm  |
| Dimension B      | 82 mm  |
| Dimension C      | 37 mm  |
| Dimension G (mm) | M8     |
| Dimension H      | 108 mm |
| Dimension L      | 43 mm  |
| Dimension t      | 2.5 mm |

## Technical data

|  |                 |
|--|-----------------|
| Number of cables/pipes                         | 1               |
| For pipe diameter, max.                        | 76 mm           |
| For pipe diameter, min.                        | 70 mm           |
| for rail with slot width (with interval), max. | 22 mm           |
| for rail with slot width (with interval), min. | 18 mm           |
| Thread   | M8              |
| Halogen-free                                   | yes             |
| Length of external dimensions                  | 37 mm           |
| Max. Tightening torque                         | 5 Nm            |
| With metal trough                              | yes             |
| Mounting type                                  | Profile rail    |
| Slot width                                     | 10 mm           |
| Clamping range D, max.                         | 76 mm           |
| Clamping range D, min.                         | 70 mm           |
| Surface addition                               | Untreated       |
| Material addition                              | Rustproof steel |
| With counter-trough                            | no              |
| Material of trough                             | Rustproof steel |