

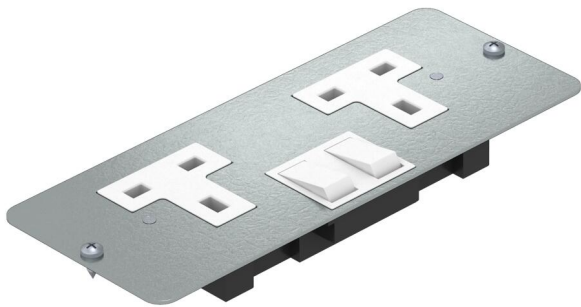
Technical data sheet

Cover plate APMT5 with double socket

Item number: 7407870



Cover plate with a switched double socket for installation in mounting supports beneath GES service outlets and cassettes. Socket with increased contact protection with screw connection, 3-pole, 13 A, 250 V~, corresponds to BS 1363.



- St

Steel
- FSO

Strip galvanised/organically coated

Master data

Item number	7407870
Type	AP MT5 BS 2SS0
Description 1	BS socket with cover plate
Description 2	double version, switched
Manufacturer	OBO
Colour	Grey-white; RAL 9002
Material	Steel
Surface	Strip galvanised/organically coated
Surface standard	DIN EN 10346
Smallest sales unit	4
Unit of quantity	Piece
Weight	23.2 kg
Weight unit	kg/100 pc.
CO Footprint (GWP) Cradle-to-Gate	0,4648 kg COe / 1 Piece

Technical data sheet

Cover plate APMT5 with double socket

Item number: 7407870



Dimensions

